

BUSINESS AND INDUSTRY INFORMATION TECHNOLOGY

i This is a targeted occupation for Capital Area/Travis County. Scholarships may be available for education and training opportunities. Contact us to learn more!

WEB DEVELOPERS

ANNUAL WAGES

ENTRY: \$53,500
MEDIAN: \$84,100
HIGH: \$106,100

HOURLY WAGES

ENTRY: \$25.74
MEDIAN: \$40.42
HIGH: \$51.03

EDUCATION AT ENTRY LEVEL

ASSOCIATE'S
DEGREE

THE AUSTIN MSA PROJECTS TO NEED OVER
1,558 WEB DEVELOPERS BY 2031. WILL YOU
BE ONE?

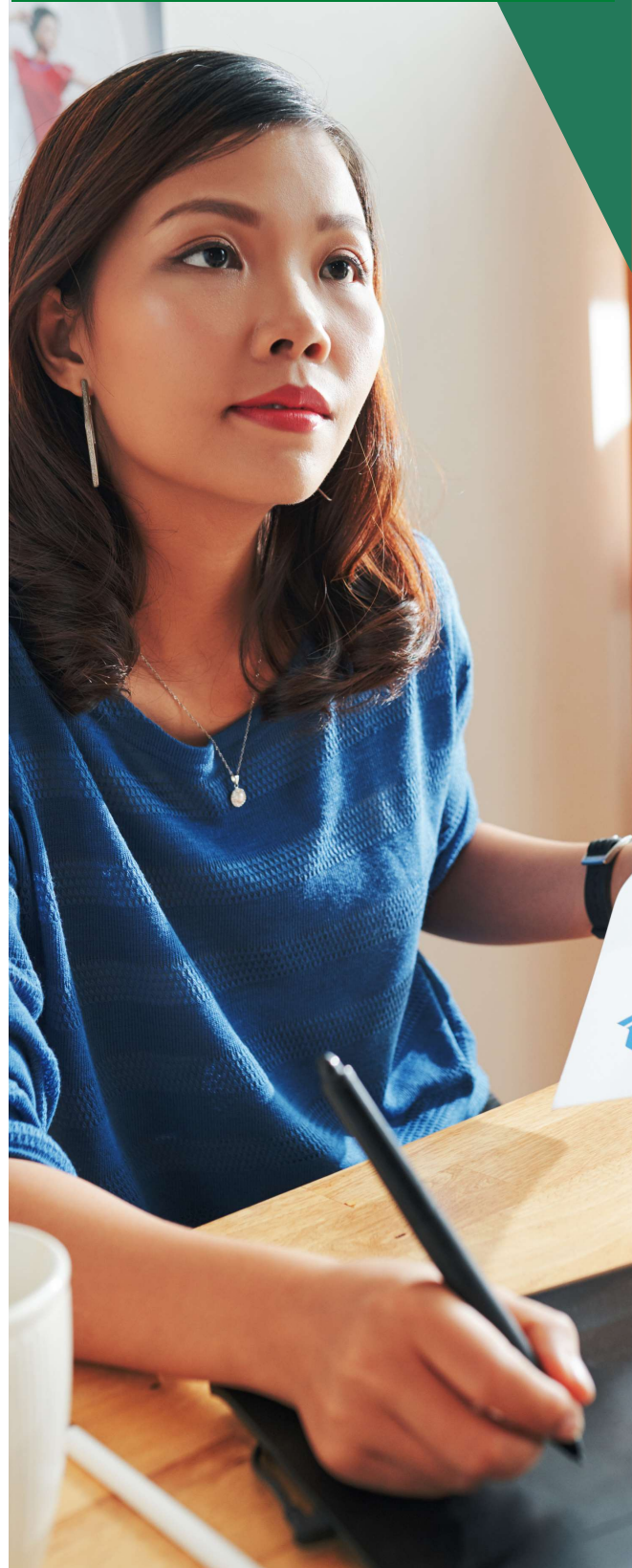


JOB DUTIES

- Write supporting code for Web applications or Web sites.
- Design, build, or maintain Web sites, using authoring or scripting languages, content creation tools, management tools, and digital media.
- Back up files from Web sites to local directories for instant recovery in case of problems.

YOU WILL THRIVE IN THIS POSITION IF...

- You like structure and making sure things are correct.
- Analytical thinking is a strong suit.
- You have strong attention to detail.
- You like when things run efficiently and are good at big-picture thinking.
- You are dependable and have integrity.
- You can work independently.
- You are adaptable/flexible.
- You can cooperate on a team.



**SCAN TO WATCH A VIDEO
ABOUT THIS CAREER PATHWAY**

Data Sources
SOC: 15-1257
O'Net, JobsEq, 2022Q\$
Wages are for Austin MSA 1

Prepared by Workforce Solutions Capital Area

A proud partner of the American Job Center Network. Workforce Solutions Capital Area is an equal opportunity employer/program. Auxiliary aids and services are available, upon request, to persons with disabilities. Relay Texas: 1.800.735.2969 (TDD) / 711 (Voice).

WEB DEVELOPERS

HOW TO GET STARTED IN THIS CAREER PATHWAY



Take language, math and science classes while in school



Participate in coding camps and hack-a-thons



Find a job or internship to build your customer service skills. Register at workintexas.com



Complete a personality test or explore more high-demand careers. Scan the code to get started!

CAREER PATHWAY

Experience Level	Occupation	Median Wages	Education Requirements
Senior Level	Software Developer and Quality Assurance Tester	\$65.63 \$136,500	Bachelor's Degree
Intermediate Level	Web Developer	\$40.42 \$84,100	Associate's or Bachelor's Degree
Entry Level	Computer User Support Specialists	\$25.41 \$52,800	Some College, or Associate's Degree

WHAT IS SOMETHING NEW YOU LEARNED ABOUT THIS CAREER?
