

BUSINESS AND INDUSTRY INFORMATION TECHNOLOGY

SOFTWARE DEVELOPERS

ANNUAL WAGES

ENTRY: \$72,200
MEDIAN: \$110,100
HIGH: \$144,200

HOURLY WAGES

ENTRY: \$34.71
MEDIAN: \$52.94
HIGH: \$69.33

EDUCATION AT ENTRY LEVEL

BACHELOR'S
DEGREE

THE AUSTIN MSA PROJECTS TO NEED OVER

 **34,115** SOFTWARE DEVELOPERS BY 2031.
WILL YOU BE ONE?

JOB DUTIES

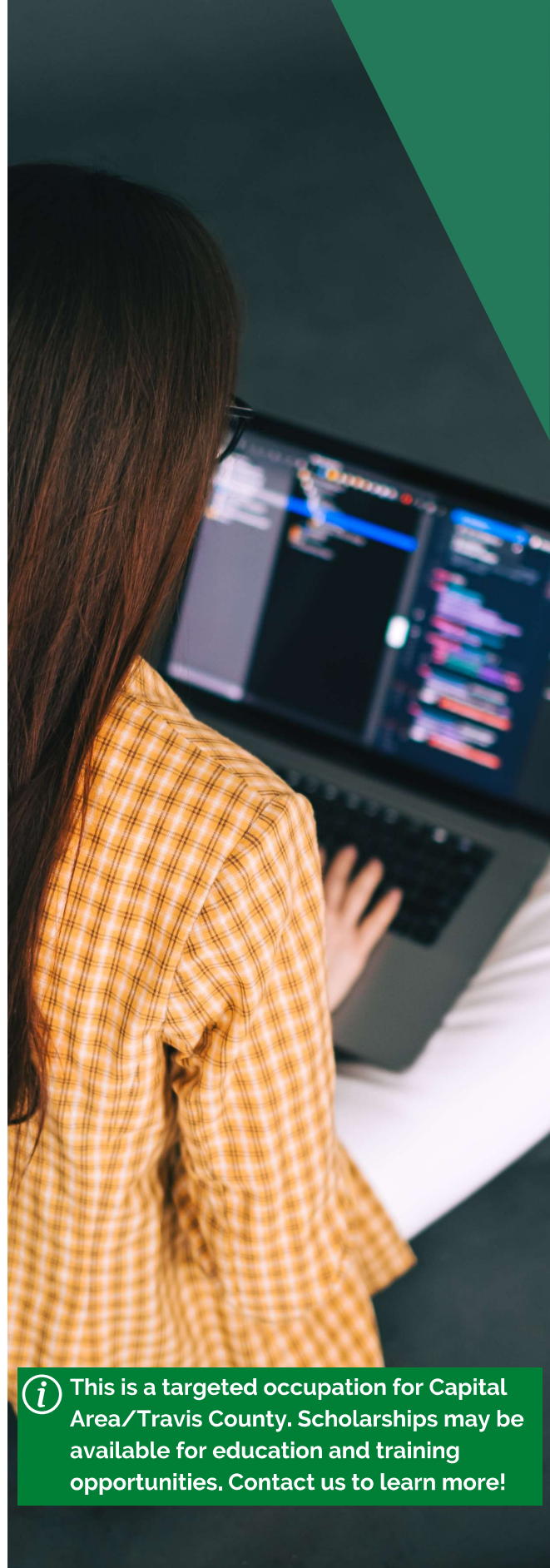
- Maintain and administer computer networks and related computing environments including computer hardware, systems software, applications software, and all configurations.
- Perform data backups and disaster recovery operations.
- Diagnose, troubleshoot, and resolve hardware, software, or other network and system problems, and replace defective components when necessary.


YOU WILL THRIVE IN THIS POSITION IF...

- You like thinking of ideas to figure out problems.
- Analytical thinking is a strong suit.
- You have strong attention to detail and persistence to solve problems.
- You are dependable and have integrity.
- You can work independently.
- You are adaptable/flexible.
- You can cooperate on a team.



**SCAN TO WATCH A VIDEO
ABOUT THIS CAREER PATHWAY**



 **This is a targeted occupation for Capital Area/Travis County. Scholarships may be available for education and training opportunities. Contact us to learn more!**

Data Sources

SOC: 15-1252

O'Net, JobsEq, 2022Q4

Wages are for Austin MSA

Prepared by Workforce Solutions Capital Area

A proud partner of the American Job Center Network. Workforce Solutions Capital Area is an equal opportunity employer/program. Auxiliary aids and services are available, upon request, to persons with disabilities. Relay Texas: 1.800.735.2969 (TDD) / 711 (Voice).

SOFTWARE DEVELOPERS

HOW TO GET STARTED IN THIS CAREER PATHWAY



Take language, math and science classes while in school



Participate in coding camps and hack-a-thons



Find a job or internship to build your customer service skills. Register at workintexas.com



Complete a personality test or explore more high-demand careers. **Scan the code to get started!**

CAREER PATHWAY

Experience Level	Occupation	Median Wages	Education Requirements
Senior Level	Software Developer	\$69.33 \$144,200	Bachelor's Degree
Intermediate Level	Web Developer and Digital Interface Design	\$49.75 \$103,500	Associate's or Bachelor's Degree
Entry Level	Computer Programmer	\$39.94 \$83,100	Associate's Degree

WHAT IS SOMETHING NEW YOU LEARNED ABOUT THIS CAREER?
