

URBAN & REGIONAL PLANNER

ANNUAL WAGES

ENTRY: \$41,500
MEDIAN: \$63,500
HIGH: \$90,100

HOURLY WAGES

ENTRY: \$19.96
MEDIAN: \$30.53
HIGH: \$43.31

EDUCATION AT ENTRY LEVEL

MASTERS
DEGREE

THE AUSTIN MSA PROJECTS TO NEED OVER
323 URBAN & REGIONAL PLANNER BY 2031.
WILL YOU BE ONE?

JOB DUTIES

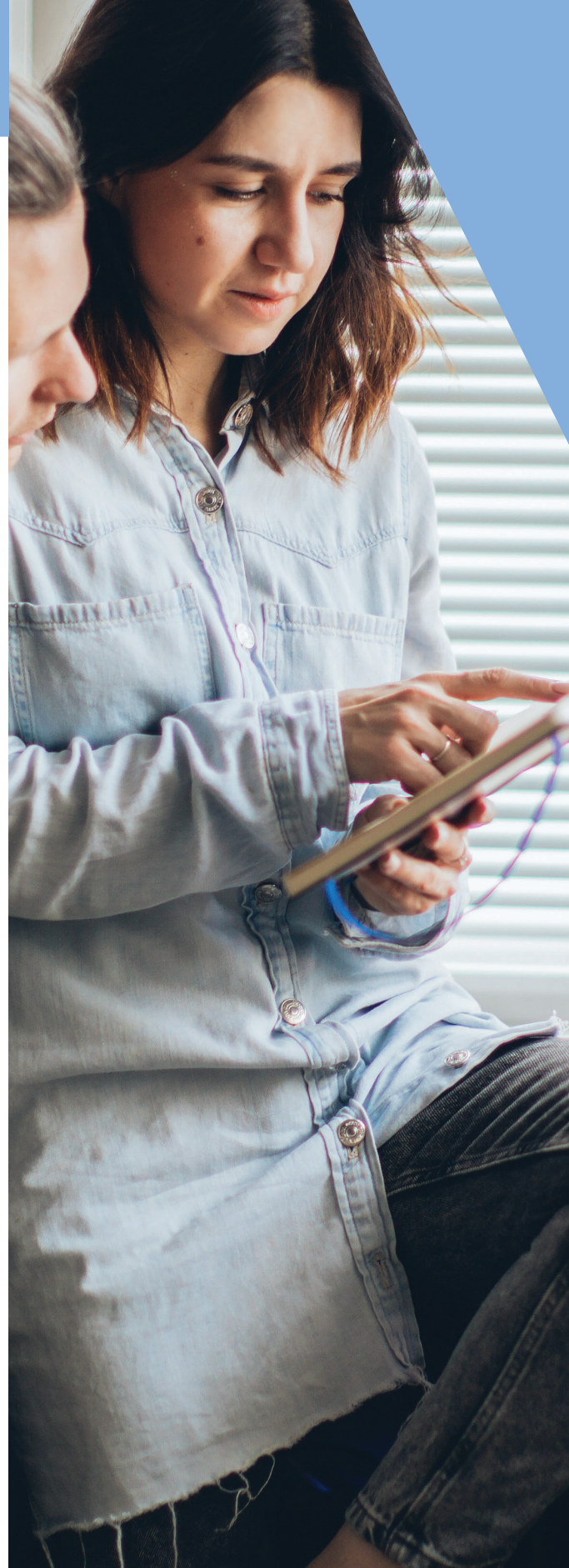
- Hold public meetings with government officials, social scientists, lawyers, developers, the public, or special interest groups to formulate, develop, or address issues regarding land use or community plans.
- Design, promote, or administer government plans or policies affecting land use, zoning, public utilities, community facilities, housing, or transportation.
- Advise planning officials on project feasibility, cost-effectiveness, regulatory conformance, or possible alternatives.

YOU WILL THRIVE IN THIS POSITION IF...

- You have attention to detail
- You are dependable
- You are a team-player
- You have Integrity
- You are adaptable/flexible



**SCAN TO WATCH A VIDEO
ABOUT THIS CAREER PATHWAY**



Data Sources

SOC: 19-3051

O'Net, JobsEq, 2021

Texas Workforce Commission, 2021

Prepared by Workforce Solutions Capital Area

A proud partner of the American Job Center Network. Workforce Solutions Capital Area is an equal opportunity employer/program. Auxiliary aids and services are available, upon request, to persons with disabilities. Relay Texas: 1.800.735.2969 (TDD) / 711 (Voice).

URBAN & REGIONAL PLANNER

HOW TO GET STARTED IN THIS CAREER PATHWAY



Take History, English and geography classes while in high school.



Volunteer at your local city council meetings or Interview a professional in the field.

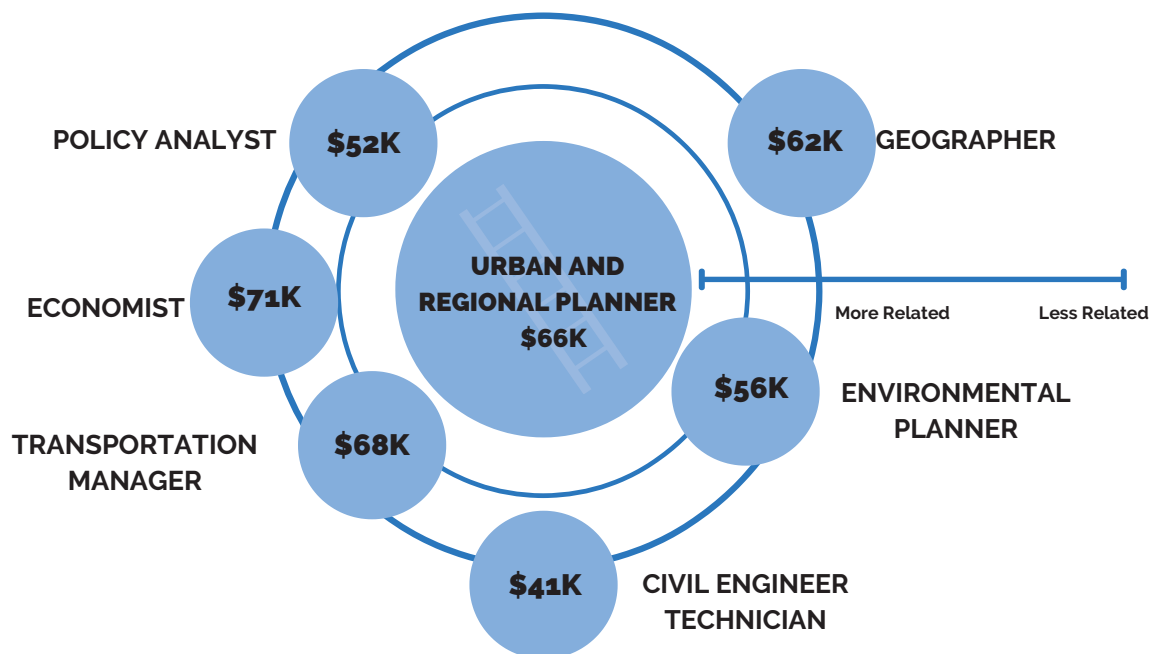


Find a part-time job or internship with your government agencies.
Register at
workintexas.com



Complete a personality test or explore more high-demand careers. **Scan the code to get started!**

RELATED JOBS WITH MEDIAN SALARY



WHAT IS SOMETHING NEW YOU LEARNED ABOUT THIS CAREER?
