

# BUSINESS AND INDUSTRY INFORMATION TECHNOLOGY

## SOFTWARE DEVELOPERS

### ANNUAL WAGES

ENTRY: \$72,300  
MEDIAN: \$107,300  
HIGH: \$127,600

### HOURLY WAGES

ENTRY: \$34.74  
MEDIAN: \$51.59  
HIGH: \$61.37

### EDUCATION AT ENTRY LEVEL

BACHELOR'S  
DEGREE

THE AUSTIN MSA PROJECTS TO NEED OVER  
**27,390** SOFTWARE DEVELOPERS BY 2031.  
WILL YOU BE ONE?



### JOB DUTIES

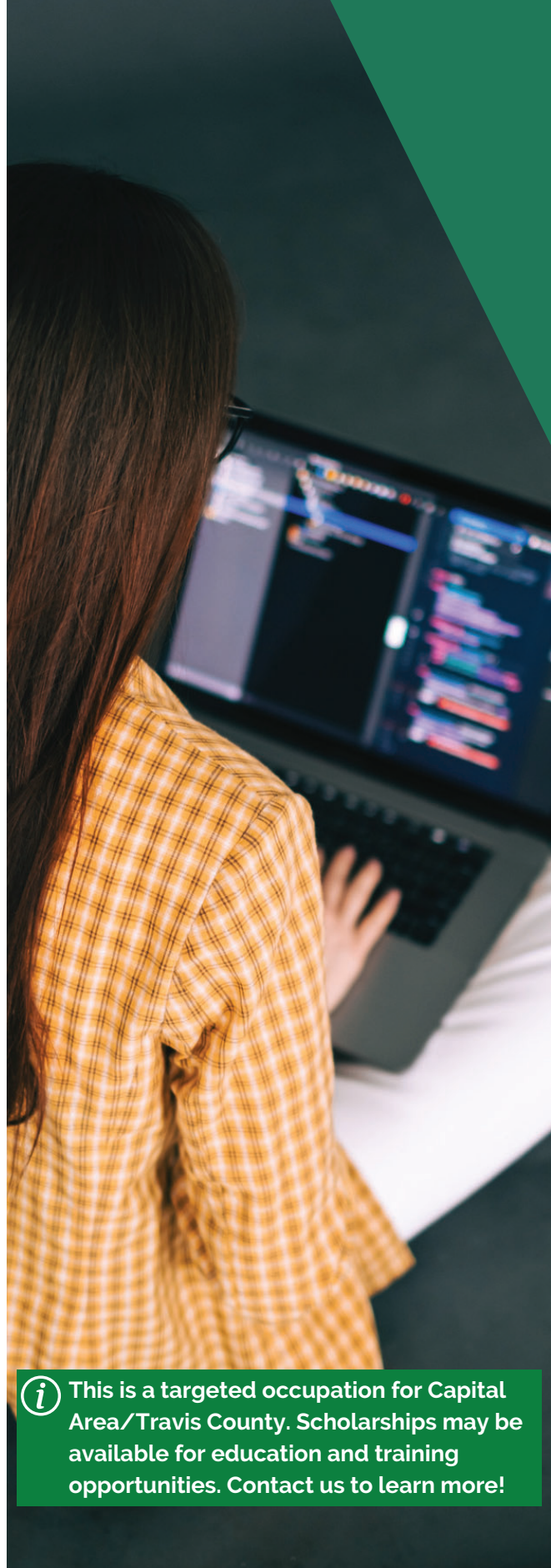
- Maintain and administer computer networks and related computing environments including computer hardware, systems software, applications software, and all configurations.
- Perform data backups and disaster recovery operations.
- Diagnose, troubleshoot, and resolve hardware, software, or other network and system problems, and replace defective components when necessary.

### YOU WILL THRIVE IN THIS POSITION IF...

- You like thinking of ideas to figure out problems.
- Analytical thinking is a strong suit.
- You have strong attention to detail and persistence to solve problems.
- You are dependable and have integrity.
- You can work independently.
- You are adaptable/flexible.
- You can cooperate on a team.



**SCAN TO WATCH A VIDEO  
ABOUT THIS CAREER PATHWAY**



This is a targeted occupation for Capital Area/Travis County. Scholarships may be available for education and training opportunities. Contact us to learn more!

Data Sources

SOC: 15-1256

O'Net, JobsEq, 2021

Texas Workforce Commission, 2021

Prepared by Workforce Solutions Capital Area

A proud partner of the American Job Center Network. Workforce Solutions Capital Area is an equal opportunity employer/program. Auxiliary aids and services are available, upon request, to persons with disabilities. Relay Texas: 1.800.735.2969 (TDD) / 711 (Voice).

# SOFTWARE DEVELOPERS

## HOW TO GET STARTED IN THIS CAREER PATHWAY



Take language, math and science classes while in school



Participate in coding camps and hack-a-thons

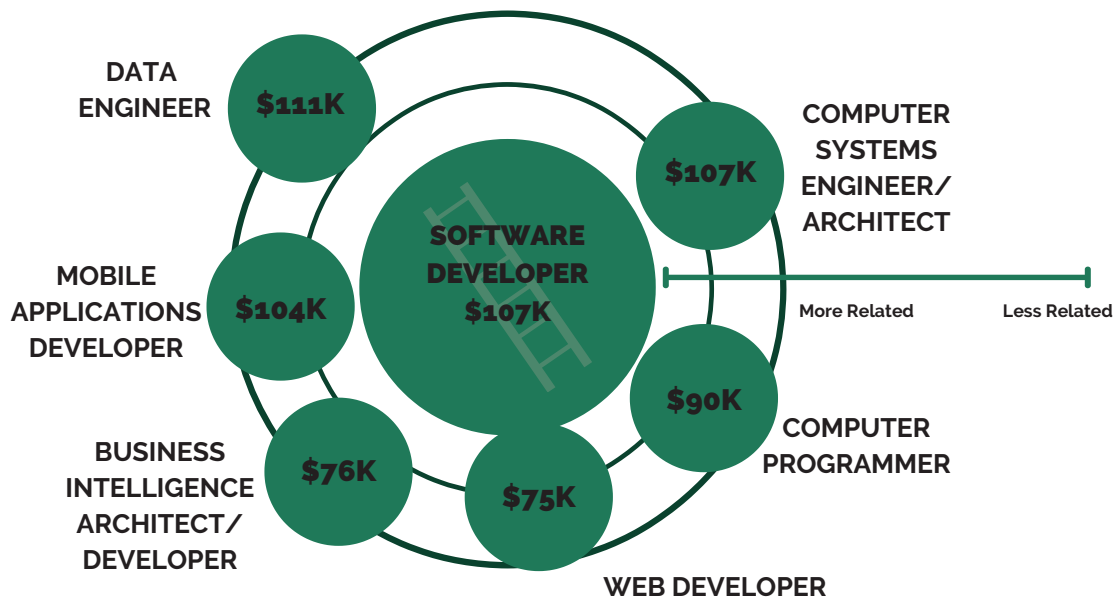


Find a job or internship to build your customer service skills. Register at [workintexas.com](http://workintexas.com)



Complete a personality test or explore more high-demand careers. **Scan the code to get started!**

## RELATED JOBS WITH MEDIAN SALARY



## WHAT IS SOMETHING NEW YOU LEARNED ABOUT THIS CAREER?

-----

-----

-----