

MAKE A DIFFERENCE IN YOUR COMMUNITY as a **Public Healthcare Worker**

Do you take pride in your community and want to advocate for your neighbors' health and wellness?



Community Health Worker (also known as a “promotores de salud”)

Wages: Entry-level: **\$33,652**/ Average: **\$43,863**

Education Required: High School diploma; the Texas Department of State Health Services operates a Community Health Worker certification program (tinyurl.com/dshtexas).

There is no cost to certification!

To Learn More: tinyurl.com/chworker

Sources: Texas Department of State Health Services, Texas Workforce Commission; Career OneStop, U.S. Bureau of Labor Statistics Occupational Employment Handbook

Do you love working with data? Are you interested in teaching people how to live healthier lives and improving access to healthcare?

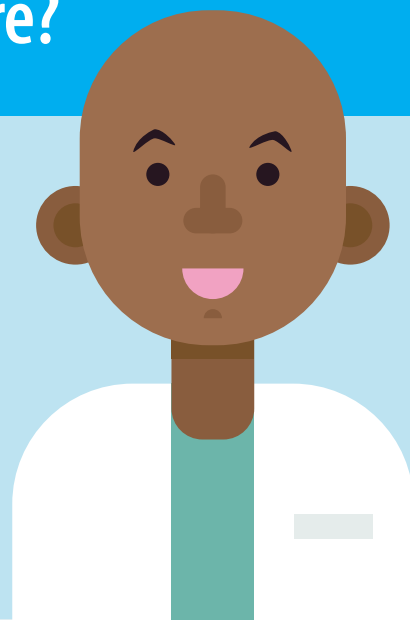
Health Educator

Wages: Entry-level: **\$37,076**/ Average: **\$58,213**

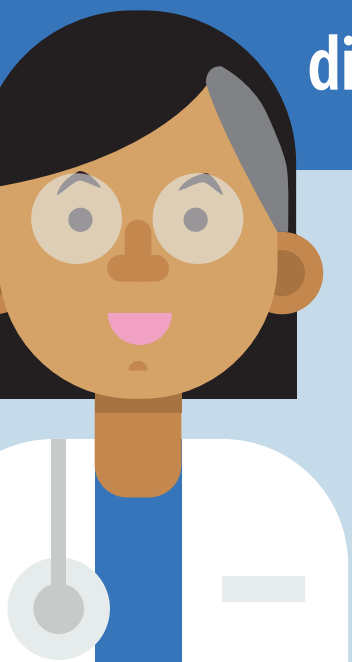
Education Required: Bachelor's degree

To Learn More: tinyurl.com/heducator

Sources: Texas Workforce Commission, ConnectEd Studios, U.S. Bureau of Labor Statistics Occupational Employment Handbook



Become a Disease Detective! As an epidemiologist, you can track infectious disease outbreaks and make plans to keep our community safe!



Epidemiologist

Wages: Entry-level: **\$54,053**/ Average: **\$108,610**

Education Required: Master's degree

To Learn More: tinyurl.com/epimedical

Sources: U.S. Bureau of Labor Statistics Occupational Employment Handbook, Texas Workforce Commission, Northwestern University Feinberg School of Medicine (video)

To learn about [other in-demand career opportunities](#) and [immediate hiring opportunities](#), check out WFS' website!

www.wfscapitalarea.com