



AUSTIN METRO AREA
MASTER COMMUNITY WORKFORCE PLAN
YEAR ONE IMPACT REPORT

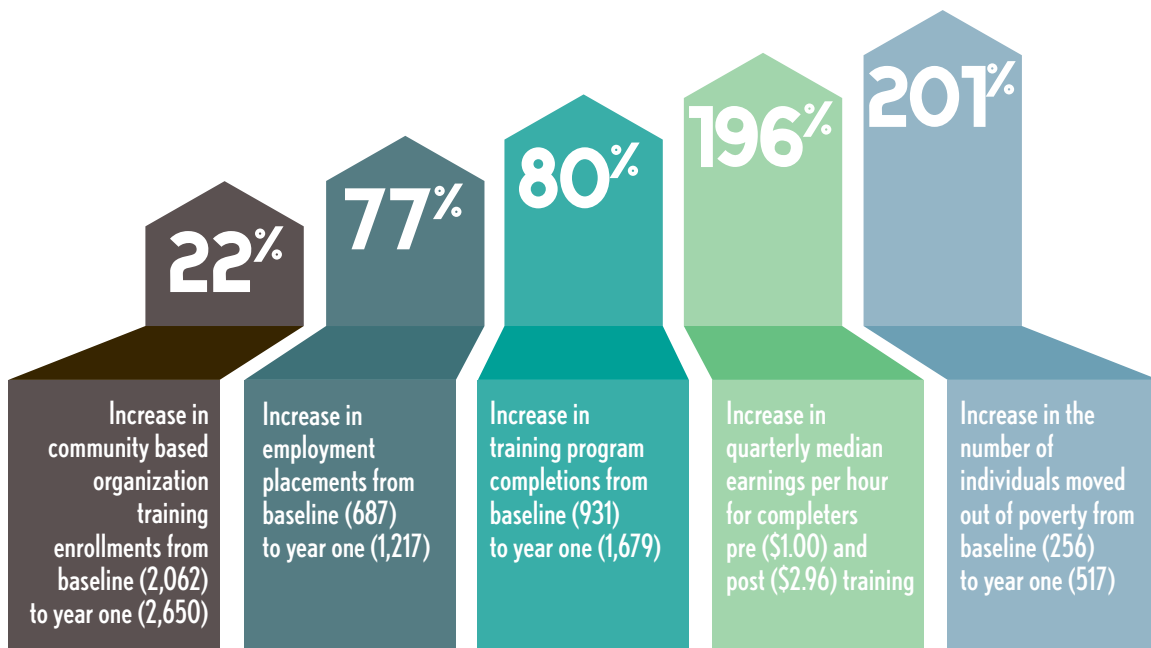
5 YEAR GOAL

Help 10,000 Austin Metro Area residents secure middle-skill jobs and move out of poverty by 2021

	BASELINE	YEAR 1	YEAR 2	YEAR 3	YEAR 4	GOAL
FISCAL YEAR	2016	2018	2019	2020	2021	
STRATEGY I: ENROLLMENT	6,750	6,027	6,500	7,500	10,000	30,000
STRATEGY II: TRAINING	931	1,679	3,100	3,500	3,800	12,000
STRATEGY III: PLACEMENT*	687	1,217	1,800	2,200	2,800	8,000
(Out Of Poverty)**	(256)	(517)	(900)	(2,000)	(3,500)	(6,920)
STRATEGY IV: UPSKILLING			400	600	1,000	2,000
		ACTUAL	TARGET			

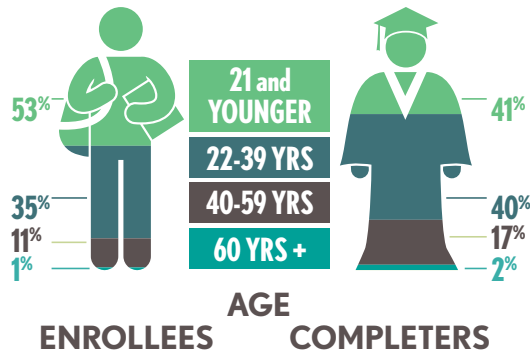
*Employment data presented only represents the first quarter following completion. This information will continue to be updated as the participants progress.

**Definition of Poverty: 200% of Federal Poverty Guidelines for 2019 Annual Income: At or below \$24,980 for a household of one. At or below \$51,500 for a household of four.



DEMOGRAPHICS OF ENROLLEES AND COMPLETERS

PARTICIPATING ORGANIZATIONS



American YouthWorks

Austin Community College

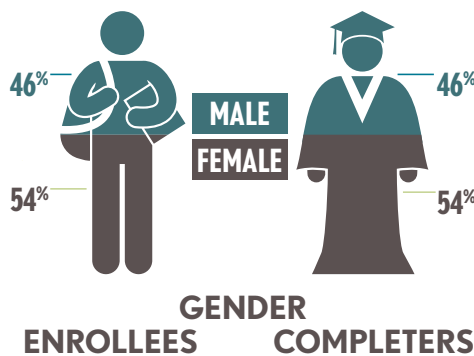
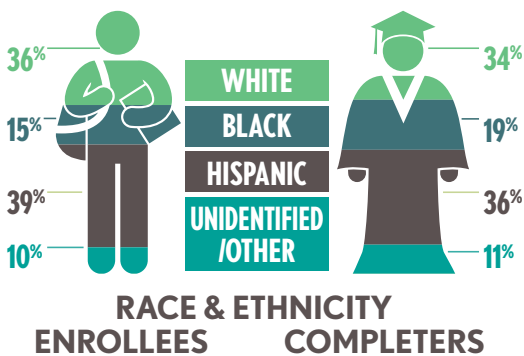
Capital IDEA

Goodwill Central Texas

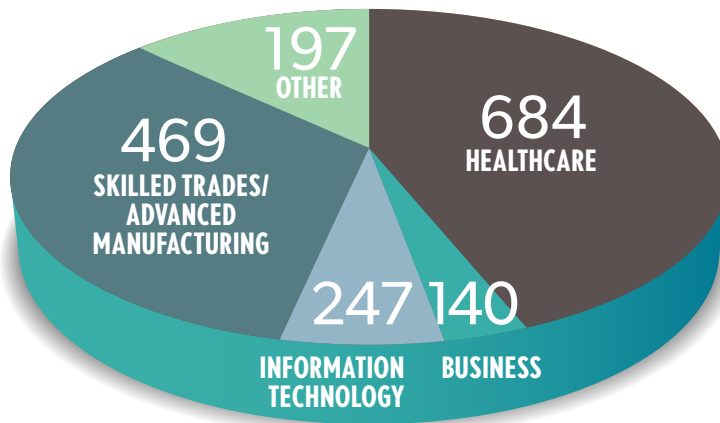
Skillpoint Alliance

Workforce Solutions Capital Area

Workforce Solutions Rural Capital Area



COMPLETION BY SECTOR



For more information, contact Workforce Solutions Capital Area Chief Strategy Officer Dr. Leah Meunier at leah.meunier@wfscapitalarea.com.

Outcomes provided by the Ray Marshall Center for the Study of Human Resources, an organized unit of The University of Texas at Austin's LBJ School of Public Affairs, with data obtained through participating organizations and the Texas Workforce Commission.



A proud partner of the [americanjobcenter](http://www.americanjobcenter.org) network
 Workforce Solutions Capital Area is an Equal Opportunity Employer/Program. Auxiliary aids and services are available, upon request, to persons with disabilities.
 Relay Texas: 1.800.735.2989 (TDD) / 711 (Voice) www.wfscapitalarea.com

www.wfscapitalarea.com