

# PUBLIC SERVICE HUMAN SERVICES

## CHILD, FAMILY & SCHOOL SOCIAL WORKERS

### ANNUAL WAGES

ENTRY: \$38,900  
MEDIAN: \$50,900  
HIGH: \$60,800

### HOURLY WAGES

ENTRY: \$18.71  
MEDIAN: \$24.48  
HIGH: \$29.22

### EDUCATION AT ENTRY LEVEL

BACHELOR'S  
DEGREE

THE AUSTIN MSA PROJECTS TO NEED OVER  
**3,393** CHILD, FAMILY & SCHOOL SOCIAL  
WORKERS BY 2031. WILL YOU BE ONE?

### JOB DUTIES

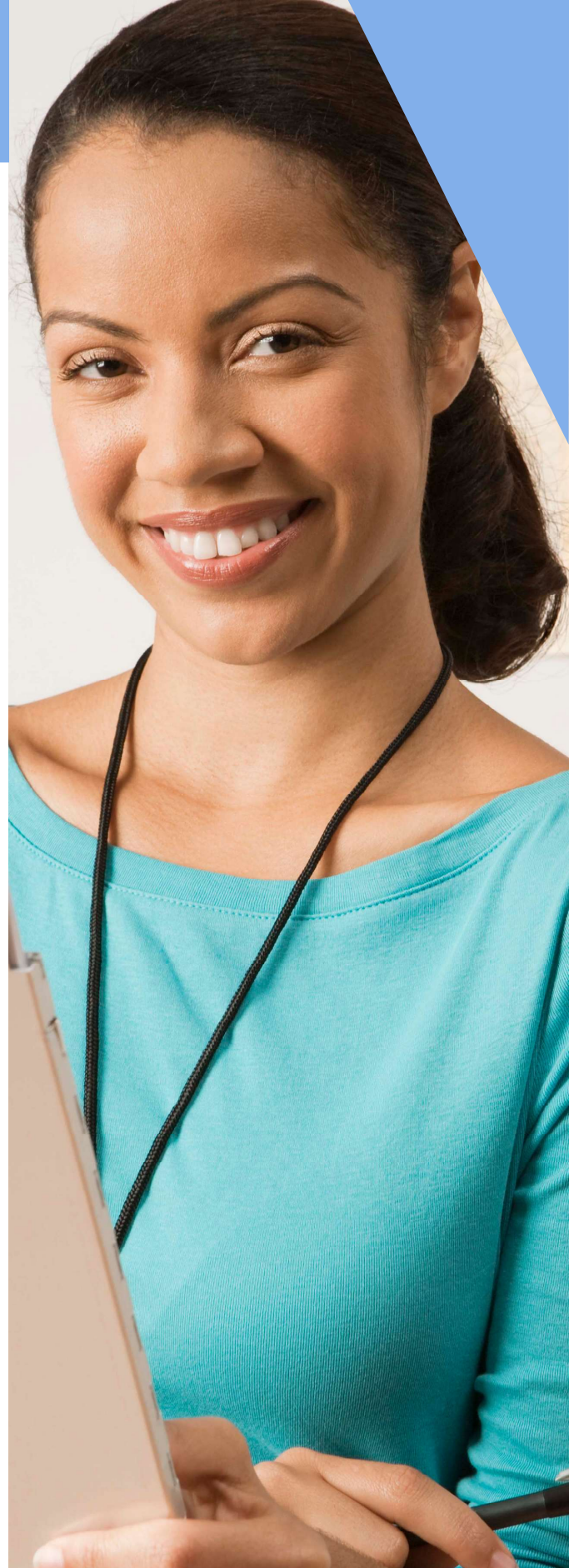
- Maintain case history records and prepare reports.
- Interview clients individually, in families, or in groups, assessing their situations, capabilities, and problems to determine what services are required to meet their needs.
- Serve as liaisons between students, homes, schools, family services, child guidance clinics, courts, protective services, doctors, and other contacts to help children who face problems, such as disabilities, abuse, or poverty.

### YOU WILL THRIVE IN THIS POSITION IF...

- You have a concern for others and love helping people.
- You are dependable.
- Your stress tolerance is high.
- You have integrity and take initiative to provide a high quality of care.
- You are adaptable and flexible.



**SCAN TO WATCH A VIDEO  
ABOUT THIS CAREER PATHWAY**



Data Sources

SOC: 21-1021

O'Net, JobsEq, 2022

Career OneStop

**Prepared by Workforce Solutions Capital Area**

A proud partner of the American Job Center Network. Workforce Solutions Capital Area is an equal opportunity employer/program. Auxiliary aids and services are available, upon request, to persons with disabilities. Relay Texas: 1.800.735.2969 (TDD) / 711 (Voice).

# CHILD, FAMILY & SCHOOL SOCIAL WORKERS

## HOW TO GET STARTED IN THIS CAREER PATHWAY



Take health, science or biology classes while in school.



Volunteer at your local hospital, homeless shelter or social service organization.

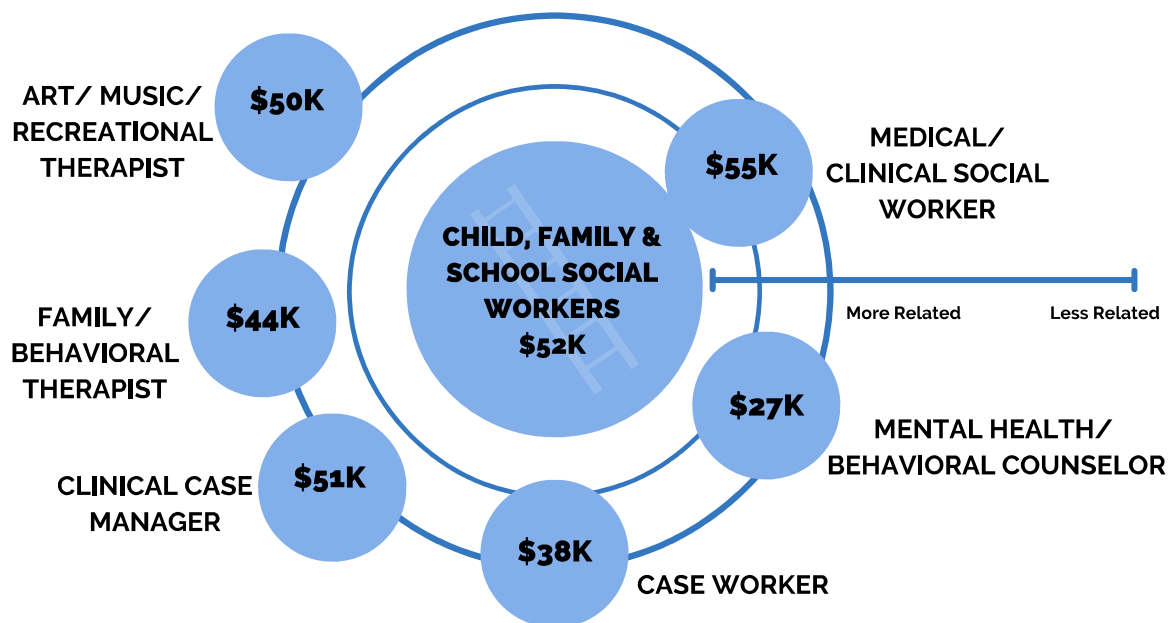


Find a part-time job or internship babysitting or with a local clinic or hospital. **Register at [workintexas.com](https://workintexas.com).**



Complete a personality test or explore more high-demand careers. **Scan the code to get started!**

## RELATED JOBS WITH MEDIAN SALARY



## WHAT IS SOMETHING NEW YOU LEARNED ABOUT THIS CAREER?

---

---

---