

# April Provider Advisory Council Meeting



# Special Guest

Melissa Hernandez

Inclusion Specialist

Workforce Solutions Capital Area



# Inclusion Program

Child Care Services at Workforce Solutions

4.11.2023



**WORKFORCE**  
SOLUTIONS Capital Area  
*Connecting People to Jobs*



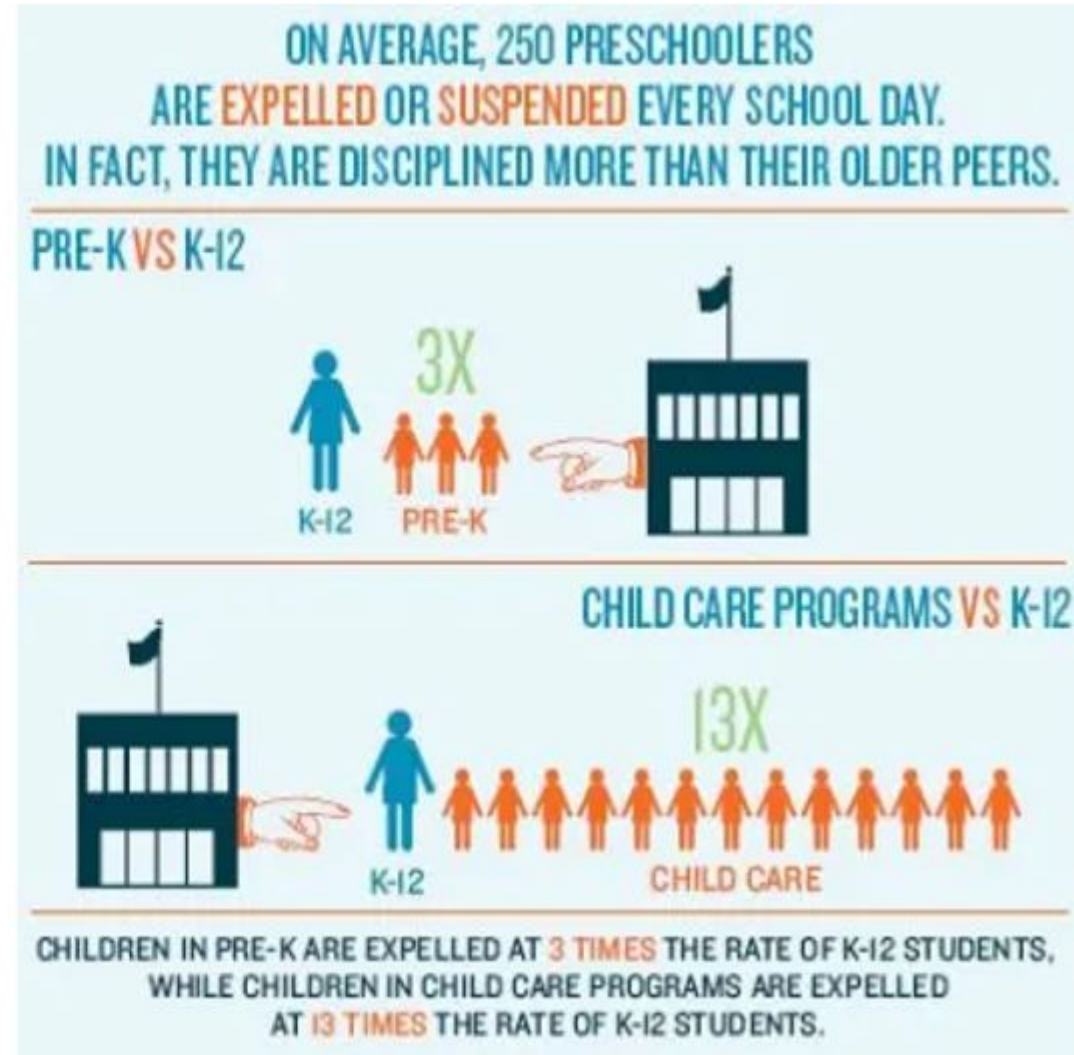
# Importance of the Inclusion Program?

*Goals: reduce expulsions and suspensions*

- Improved continuity of care
- Facilitate academic achievement



4.11.2023



# How can inclusion services help?

Child  
Observations

Teachers gain  
knowledge to  
help children in  
care

Trainings offered  
to child care staff

Family  
empowerment in  
meeting child's  
needs

Referrals to  
additional  
community  
programs

Increased  
reimbursement  
rate to meet  
needs of children

Provide technical  
assistance

4.11.2023

3

# Who is eligible?

## For Inclusion Request:

- Any child with CCS scholarships whose parents and/or teacher have developmental or behavioral concerns



4.11.2023

## For Inclusion Rate Reimbursement:

Children receiving one of the following:

- Early Childhood Intervention and have an IFSP
- Special Education Services and have an IEP
- Receiving SSI or SSDI

4

# Process of Referral

1

Child care staff discusses concerns and Inclusion Program with family  
Complete Inclusion Request form  
Email to [ccs.support@wfscapitalarea.com](mailto:ccs.support@wfscapitalarea.com)

2

Family completes intake paperwork and developmental screenings

3

Inclusion Specialist completes classroom observation and Provider Intake form with child care staff

4

Strategies are given to child care staff and family to aid in the child's development  
Further referrals may be made

5

Plan is made with child care and family  
Follow-up completed with child care center within 30 days

4.11.2023

5



# Inclusion Request Form

Email to:

[ccs.support@wfscapitalarea.com](mailto:ccs.support@wfscapitalarea.com)



Request for Inclusion Services

Upon completion email to: [ccs.support@wfscapitalarea.com](mailto:ccs.support@wfscapitalarea.com)

Parent: \_\_\_\_\_ Child: \_\_\_\_\_ DOB: \_\_\_\_\_

Parent's Phone Number: \_\_\_\_\_ TWIST ID: \_\_\_\_\_

Center / Provider's Name: \_\_\_\_\_ Center / Provider's Number: \_\_\_\_\_

Who is requesting inclusion services? (Check all that apply)

☐ Parent / Guardian ☐ Provider (Teacher, Director, or Child Care Staff)

Please explain any developmental concerns (speech, behavior, motor, etc.): \_\_\_\_\_

\_\_\_\_\_

\_\_\_\_\_

\_\_\_\_\_

By signing below, you are consenting to one or more of the following screenings an ASQ-3, ASQ SE-2, or other assessment tool, and an observation to be conducted at the child care center listed above. Following the screenings / assessment and the observation a staff member from Workforce Solutions will contact you with recommendations and resources.

☐ I agree that all developmental screenings / assessments reports may be released to my child's school / child care center.

\_\_\_\_\_

Parent / Guardian Signature

Date

4.11.2023

6







# Thank you

4.11.2023

## Contact

Christina Conrad, BS

Family and Community Engagement Supervisor

512-597-7250

[Christina.Conrad@wfscapitalarea.com](mailto:Christina.Conrad@wfscapitalarea.com)

Melissa Hernandez, BA EIS

Inclusion Specialist

512-597-7189

[Melissa.Hernandez@wfscapitalarea.com](mailto:Melissa.Hernandez@wfscapitalarea.com)

7



**WORKFORCE**  
SOLUTIONS Capital Area  
*Connecting People to Jobs*

# Early Learning Program Updates

- 5th CCRF Payments - Eligible providers will be sent their 5th payment in the Summer of 2023. Eligible providers do not have to apply or submit any documentation to receive a 5th CCRF Payment.
- Reporting Absences - All programs are asked to report each time that a child has 5 consecutive absences.
- Please report when a child stops attending - We encourage programs to report when a child stops attending their facility.

\*Reminder: Summer is coming! (and so are summer rates)



## 5 Day Consecutive Absences Report

Provider Name \*

License Number \*

Name of Person Submitting Form \*

First Name

Last Name



---

# **Texas Child Care Connection (TXC3)**

# Texas Child Care Connection (TX3C)

- Texas Workforce Commission (TWC) is working with KinderSystems, the vendor selected to create the new child care case management system for child care services with the 28 Workforce Development Boards across the state of Texas.
- This new system has been officially named – Texas Child Care Connection (TX3C)
- TX3C will be rolled out in 2 phases: Automated Attendance and Case Management



# Phase 1: Automated Attendance

- Planned roll out date May 17, 2023
- Training webinars scheduled to begin the week of April 24th with KinderSystems training staff.
  - Evenings and weekend time slot options
  - Recordings will be available for self-paced viewing
- Mobile devices will be deployed to child care programs
  - KinderSystems supports other programs, such as Bright Wheel and SmartCare, so these existing devices may be used to record and track attendance

# Phase 2: Case Management

- Planned launch date – October 1, 2023
- This phase will include the following:
  - Application Intake
  - Wait List
  - Eligibility and Notices
  - Prospective Payments

# Waitlist Status now available on our website!

## For Parents

Our Child Care Services team supports families with affordable, high-quality child care options. **We award child care scholarships** to eligible families in Travis County. We connect you with over 400 early learning programs and you get to choose the one that best fits your family's needs.

GET STARTED!

WAITLIST STATUS

Enrollment status	Current <i>estimated</i> waitlist time	Our last enrollment outreach
<b>OPEN</b>	<b>3–6 months</b>	<b>12/12/22</b>
We are actively outreaching parents from our waitlist for enrollment	The estimated amount of time before we outreach you for enrollment	Customers placed on our waitlist through <b>11/07/22</b> were contacted



On **April 1, 2023**, the state of Texas will begin the process of rechecking Medicaid eligibility for about 2.7 million Texas women and children who currently receive Medicaid coverage. The state will begin rechecking eligibility by starting with those most likely to have a change in their eligibility:

- Pregnant women who have had their baby
- Kids who have turned 19
- Kids whose family income has changed

This may be a confusing time and things are changing fast. Some Texans may lose Medicaid coverage because they no longer qualify. Visit [staycoveredtx.org](https://staycoveredtx.org) for resources and information for families going through this process.



Cohort invitations going out soon!



WFS Capital Area Mentors will help you achieve TRS Certification by supporting you through evaluation and enhancement of your **Procedures** while building **Relationships** based on **Equity** and developmentally appropriate **Practice**.

Early Learning Programs will be invited to a cohort based on survey response, eligibility, interest, permit type, program size, and mentor availability. Please email questions to [wfs.trs@wfscapitalarea.com](mailto:wfs.trs@wfscapitalarea.com).



# United Way of Greater Austin Cost Model Survey

A \$100 electronic gift card will be provided to programs who submit a completed survey on time!



United Way for  
Greater Austin



Deadline to Complete the  
Survey is April 28th!

By measuring the true cost of services like child care, United Way can better inform policymakers about your needs and advocate for additional funding to support your work.

As a local child care provider, you play a critical role in this project. The more providers who share information about their program structure and expenses, the more nuanced and reliable the cost model will be.

 **The survey will take 1 - 2 hours to complete** and is structured in four parts.

- You may save your progress and make edits if you are using the same device and enable cookies on your web browser.
- Please note responses are not saved until you click "Next" on each page.
- [View this PDF](#) to see all of the questions that will be asked on this survey.
- If you would prefer to complete a spreadsheet to filling out this form, please contact [Margo.Kinneberg@UWATX.org](mailto:Margo.Kinneberg@UWATX.org).



**WORKFORCE**  
SOLUTIONS Capital Area  
Connecting People to Jobs

## Weekly Meet & Greet

Tuesdays  
6:00 PM - 8:00 PM  
on Zoom

In-person meetings  
TBD



SAVE THE  
DATE

Monday, May 8, 2023

SECOND  
ANNUAL

# A Day Without Child Care

**A Solidarity Strike & National Day  
of Action for Child Care in America**



Day Without Childcare at Texas Capitol  
Monday, May 8, 2023 12:30 PM - 2:30 PM CT  
Texas State Capitol, 101 E 15th St, Austin, TX 78704





# Special Scholarship for City of Austin and Travis County

Start your educational journey today!



T.E.A.C.H. Early Childhood® Texas is a comprehensive scholarship model designed to retain early childhood professionals through increasing their education and compensation. Their scholarships utilize a cost-sharing model that creates a partnership between the scholarship recipient, their employer, and T.E.A.C.H. Early Childhood® Texas.

## Eligibility Criteria:

- High school diploma or GED
- Earn less than \$20 per hour
- Employed at least 30 hrs/week at a licensed child care center OR licensed or registered family child care home **located within the City of Austin and Travis County.**



[www.texasaeyc.org](http://www.texasaeyc.org)  
[teach@texasaeyc.org](mailto:teach@texasaeyc.org)  
(512) 215-8142





# Free Texas Annual Training Available Now!

In partnership with the Texas Workforce Commission, Texas A&M AgriLife Extension's Promoting Early Education Quality program is offering a suite of twelve online courses, aligned with the annual professional development requirements from Minimum Standards, for **FREE** for early childhood professionals in Texas.

Trainees can earn up to 20 clock hours via the Texas Annual Training category on the AgriLife Learning Platform.

TEXAS A&M  
AGRI  
LIFE  
EXTENSION

PROMOTING EARLY  
EDUCATION QUALITY



Scan to begin the Texas  
Annual Training courses



[tx.ag/TexasAnnualTraining](https://tx.ag/TexasAnnualTraining)



**WORKFORCE**  
SOLUTIONS  
Capital Area  
*Connecting People to Jobs*


# Training Opportunities

- Check out our Eventbrite Page and never miss a training!
  - 2022-23 Training Calendar available on Eventbrite now!
  - Upcoming Trainings posted through May for registration including:
    - TRS Category Trainings (offered quarterly in English and Spanish)
    - Mentoring for Success: Building Strong Teams (May 20th, In-Person)
    - TRS Orientation (May 11th, Zoom)
- Texas Rising Star and Entry Level Programs
  - Our TRS Director Meetings will continue in March. Our next meeting will be Thursday, May 4th, at 12:00pm and 6:00pm.
- Free Monthly CPR/ First Aid classes now available!  
(AED Machines available to programs who participate)



**CPR/ First Aid  
Monthly!**



**Texas**   
**Rising Star**

# BakerRipley Child Care Services Team and Contacts

Topics/Questions	Contact Information
<b><u>Parent Inquires</u></b> - parents are interested in services, want to sign up for waitlist, need changes, etc.	<a href="mailto:austinccs@wfscapitalarea.com">austinccs@wfscapitalarea.com</a>
<b><u>Finance Team</u></b> - questions about payments, missing dates, full time/blended amounts, etc.	<a href="mailto:ccsfinance@wfscapitalarea.com">ccsfinance@wfscapitalarea.com</a>
<b><u>Provider Services</u></b> - update your Provider Information Form, attendance, rates, holidays, etc.	<a href="mailto:ccsproviderservices@wfscapitalarea.com">ccsproviderservices@wfscapitalarea.com</a>
<b><u>Quality Initiatives</u></b> - want to become a TRS provider, have questions about the process, PPR distribution, training, etc.	<a href="mailto:ccsquality@wfscapitalarea.com">ccsquality@wfscapitalarea.com</a>
<b><u>Local Referral Partners</u></b> – send in referral, become a referral partner, etc.	<a href="mailto:ccslocalreferral@wfscapitalarea.com">ccslocalreferral@wfscapitalarea.com</a>
<b><u>Inclusion Services</u></b> - Concerns about a child's development and/or challenging behaviors.	<a href="mailto:ccs.support@wfscapitalarea.com">ccs.support@wfscapitalarea.com</a>