



WHO WE ARE

SYSTEM & AGENCY OVERVIEW

JULY 2022

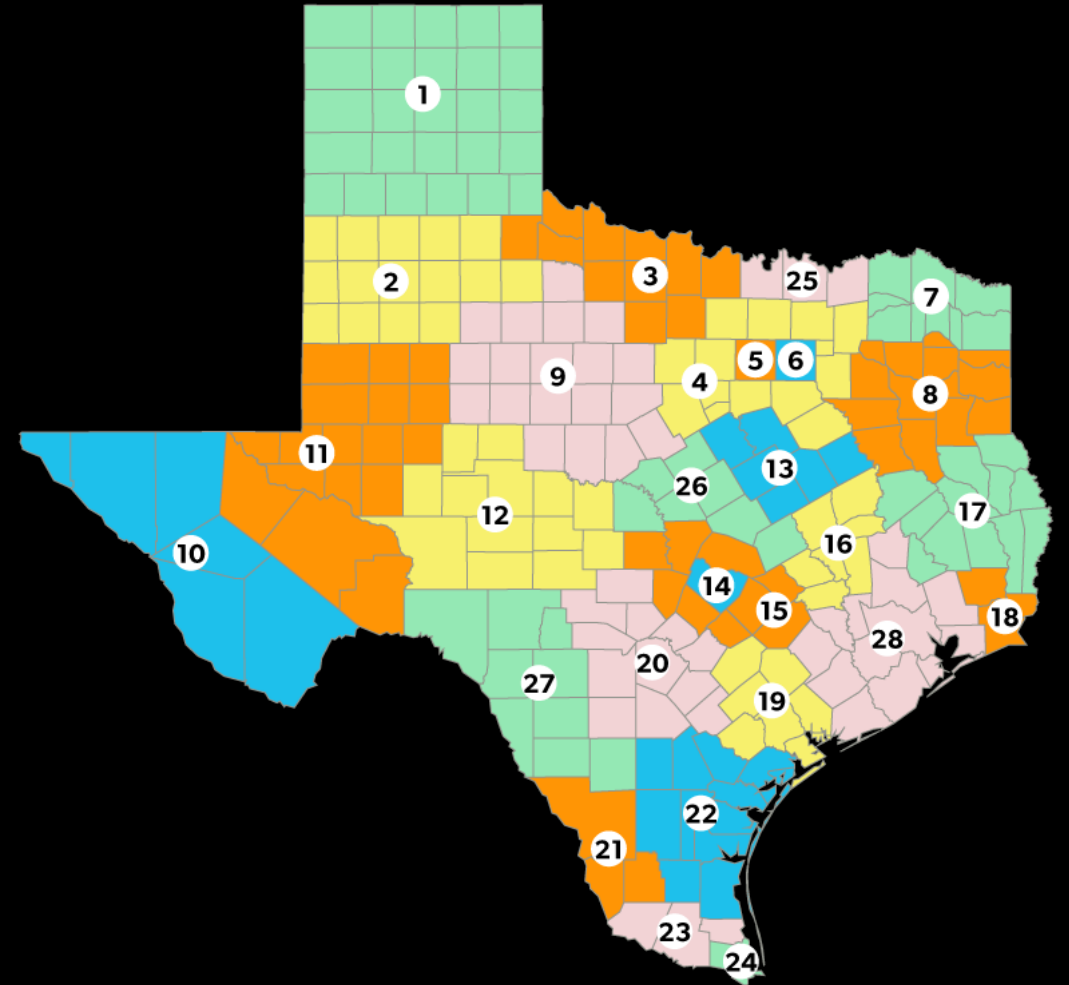
A proud partner of the [americanjobcenter](#) network

Workforce Solutions Capital Area is an Equal Opportunity Employer/Program. Auxiliary aids and services are available, upon request, to persons with disabilities. Relay Texas: 1.800.735.2989 (TDD) / 711 (Voice) · www.wfscapitalarea.com



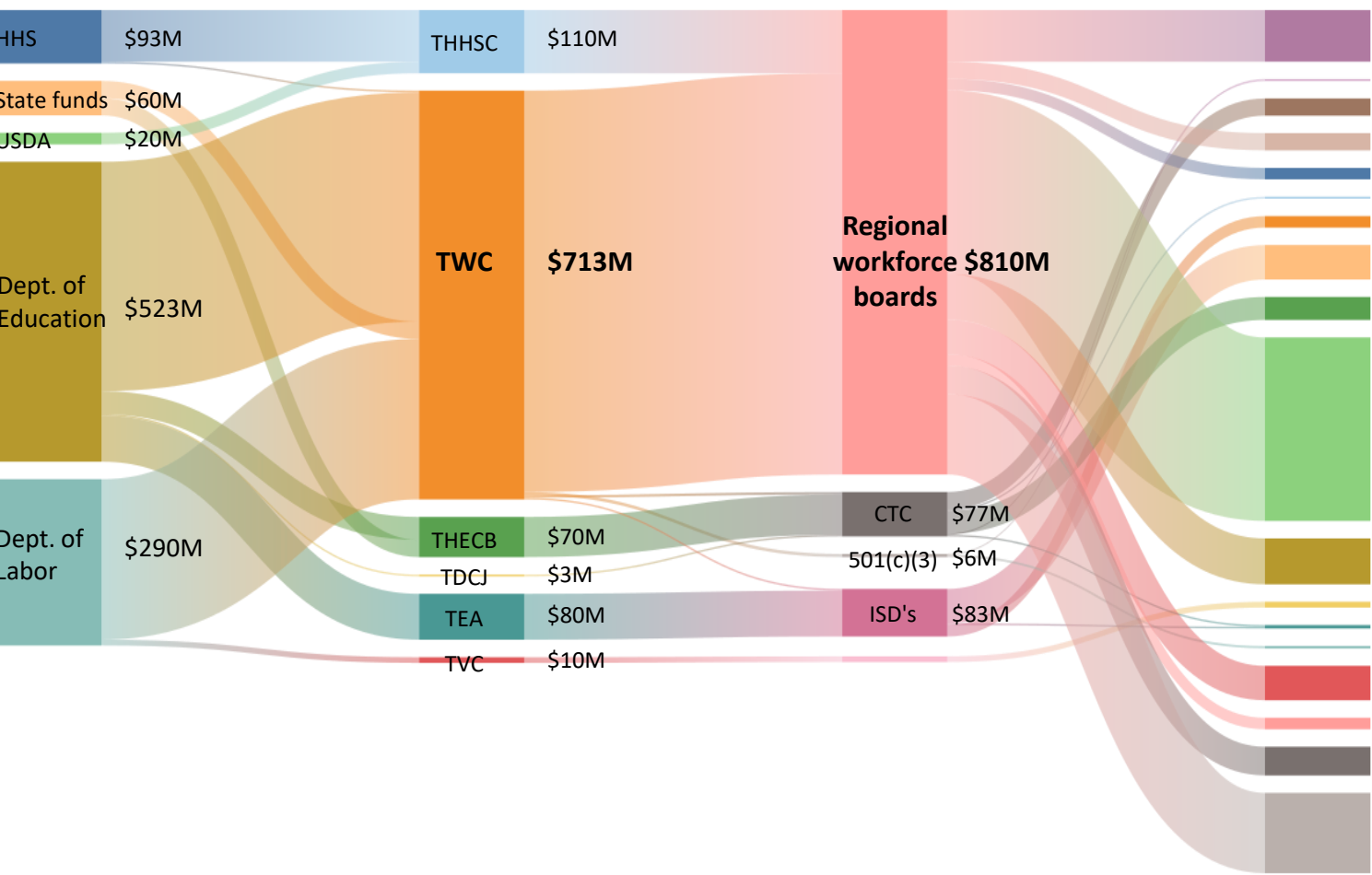
Texas Workforce Development Boards

- | | |
|-------------------------|-----------------------------|
| 1. Panhandle | 15. Rural Capital Area |
| 2. South Plains | 16. Brazos Valley |
| 3. North Texas | 17. Deep East Texas |
| 4. North Central Texas | 18. Southeast Texas |
| 5. Tarrant County | 19. Golden Crescent |
| 6. Greater Dallas | 20. Alamo |
| 7. Northeast Texas | 21. South Texas |
| 8. East Texas | 22. Coastal Bend |
| 9. West Central Texas | 23. Lower Rio Grande Valley |
| 10. Borderplex | 24. Cameron |
| 11. Permian Basin | 25. Texoma |
| 12. Concho Valley | 26. Central Texas |
| 13. Heart of Texas | 27. Middle Rio Grande |
| 14. Capital Area | 28. Gulf Coast |



70% of Texas' workforce funding flows from the federal government, through TWC, and to regional workforce boards to run programs

Texas Workforce Development Programs Funding Flows



Program Name	\$M
TANF Choices	\$90M
Self sufficiency fund	\$3M
CTC—Academic Education	\$30M
Skills Development Fund	\$30M
SNAP Employment & Training	\$20M
CTC—Post Secondary Corrections	\$3M
CTE Secondary & Corrections (Perkins V)	\$20M
Secondary Education Windham (Perkins V)	\$60M
CTC—Technical Education (Perkins V)	\$40M
WIOA—Rehabilitation Services Title IV	\$320M
WIOA—Adults Title II	\$80M
Veteran Employment & Training	\$10M
Apprenticeships	\$6M
Senior Employment	\$4M
WIOA—Title I Youth	\$60M
Trade Adjustment Assistance	\$20M
WIOA—Wagner-Peyser Title III	\$50M
WIOA—Title I Adults & Dislocated Adults	\$140M

Source: Texas Workforce Investment Council, Texas Workforce System Program Directory; TX GAA FY 20-21; TEA Federal Grant Awards
Adapted from Aim Higher Texas

Workforce Solutions Capital Area
provides oversight of the region's
employment ecosystem

*We support and **connect**
local people to local jobs*



WORKFORCE SOLUTIONS IS A ONE-STOP SHOP FOR EMPLOYMENT

Job Seekers

Go-to source for no-cost job search & employment services

- Find a job
- Build your resume & prep for interviews
- Career training scholarships
- Receive wraparound supports while you work or train

Employers

Helping businesses hire, train, & retain skilled workers

- Finding talent
- Hiring events
- Employee skills training
- Layoff assistance/aversion

Youth (ages 16-24)

Helping youth complete their education & find and keep employment

- Education support for GED, college or trade programs
- Career-case management support
- Career-readiness training & paid internships
- Job placement support & services

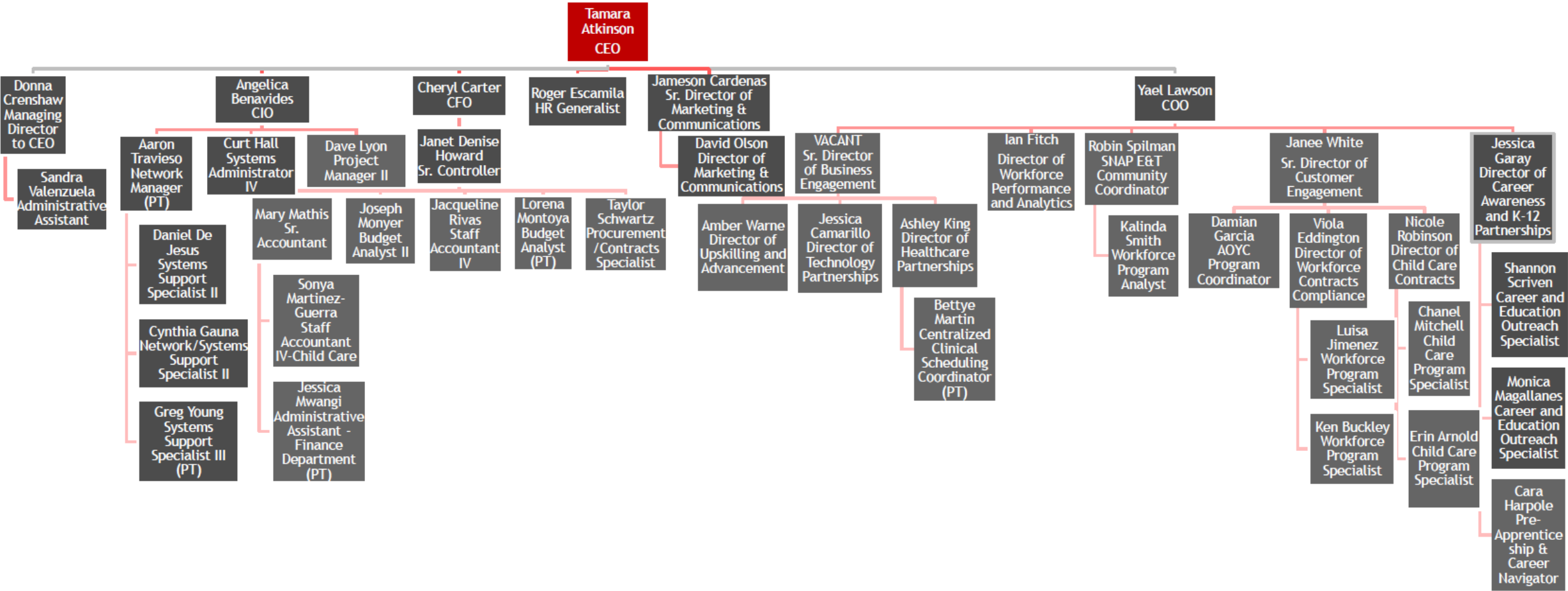
Parents

Helping parents pay for childcare so they can work or go to school

- Childcare scholarships
- Choose a provider that meets the needs of your family

NOTE We also work with childcare providers to achieve greater measures of quality & help prep children for success in kindergarten

WORKFORCE SOLUTIONS CAPITAL AREA ORG CHART



CONNECT WITH US

wfscapitalarea.com | [@wfscapitalarea](https://www.instagram.com/wfscapitalarea)

