



WORKFORCE
SOLUTIONS Capital Area

Connecting People to Jobs

Workforce Wednesday

October 13, 2021

Welcome! Please introduce yourself
in the chat box while we wait
for everyone to join us.

October's Topic:

Career opportunities in the healthcare industry!

Special employer guests include Texas Assisted Living Association and Retirement Center Management.



- ◆ What is LMI?
- ◆ How do I read this?
- ◆ What am I looking for?
- ◆ Why is this important?
- ◆ Where can I request this for a different Career?
 - ◆ [Use this link!](#)

Labor Market Data



NURSING ASSISTANT

ANNUAL WAGES

ENTRY: \$24,700
MEDIAN: \$30,300
HIGH: \$39,100

HOURLY WAGES

ENTRY: \$11.86
MEDIAN: \$14.55
HIGH: \$18.80

EDUCATION AT ENTRY LEVEL CERTIFICATION

THE AUSTIN MSA PROJECTS TO NEED OVER **7,304** NURSING ASSISTANTS BY 2031. WILL YOU BE ONE?

JOB DUTIES

- Provide or assist with basic care or support under the direction of onsite licensed nursing staff.
- Perform duties such as monitoring of health status, feeding, bathing, dressing, grooming, toileting, or ambulation of patients in a health or nursing facility.
- May include medication administration and other health-related tasks. Includes nursing care attendants, nursing aides, and nursing attendants.

YOU WILL THRIVE IN THIS POSITION IF...

- You have attention to detail
- You are dependable
- You have integrity
- You have self control
- You have the ability to handle stress
- You are empathic
- You are adaptable/flexible



**SCAN TO WATCH A VIDEO
ABOUT THIS CAREER PATHWAY**

i This is a targeted occupation for Capital Area/Travis County. Scholarships may be available for education and training opportunities. Contact us to learn more!



Data Sources
SOC: 31-1131

O'Net, JobsEq, 2021
Texas Workforce Commission, 2021

Prepared by Workforce Solutions Capital Area

A proud partner of the American Job Center Network. Workforce Solutions Capital Area is an equal opportunity employer/program. Auxiliary aids and services are available, upon request, to persons with disabilities. Relay Texas: 1.800.735.2969 (TDD) / 711 (Voice).

NURSING ASSISTANT

HOW TO GET STARTED IN THIS CAREER PATHWAY



Take STEM, English and medical terminology classes while in high school.



Partake in a internship in the field of health sciences. Become certified in CPR/First Aid or interview a professional in the field.

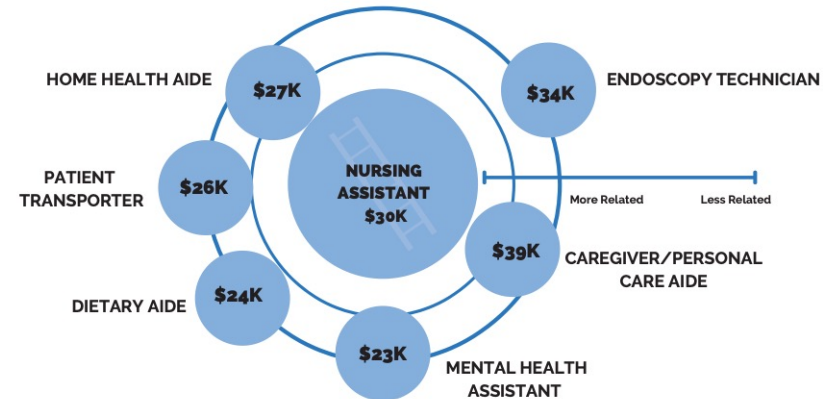


Find a part-time job with a your local Doctor's Office or hospital.
Register at
workintexas.com



Complete a personality test or explore more high-demand careers. **Scan the code to get started!**

RELATED JOBS WITH MEDIAN SALARY



WHAT IS SOMETHING NEW YOU LEARNED ABOUT THIS CAREER?

Data Sources

SOC: 31-1131

O'Net, JobsEq, 2021

Texas Workforce Commission, 2021

Prepared by Workforce Solutions Capital Area

A proud partner of the American Job Center Network. Workforce Solutions Capital Area is an equal opportunity employer/program. Auxiliary aids and services are available, upon request, to persons with disabilities. Relay Texas: 1.800.735.2969 (TDD) / 711 (Voice).

CHEFS AND HEAD COOKS

ANNUAL WAGES

ENTRY: \$42,500
MEDIAN: \$62,200
HIGH: \$71,800

HOURLY WAGES

ENTRY: \$20.42
MEDIAN: \$29.89
HIGH: \$34.52

EDUCATION AT ENTRY LEVEL

HIGH SCHOOL
DIPLOMA/
EQUIVALENT

THE AUSTIN MSA PROJECTS TO NEED OVER
1,068 CHEFS AND HEAD COOKS BY 2031.
WILL YOU BE ONE?

JOB DUTIES

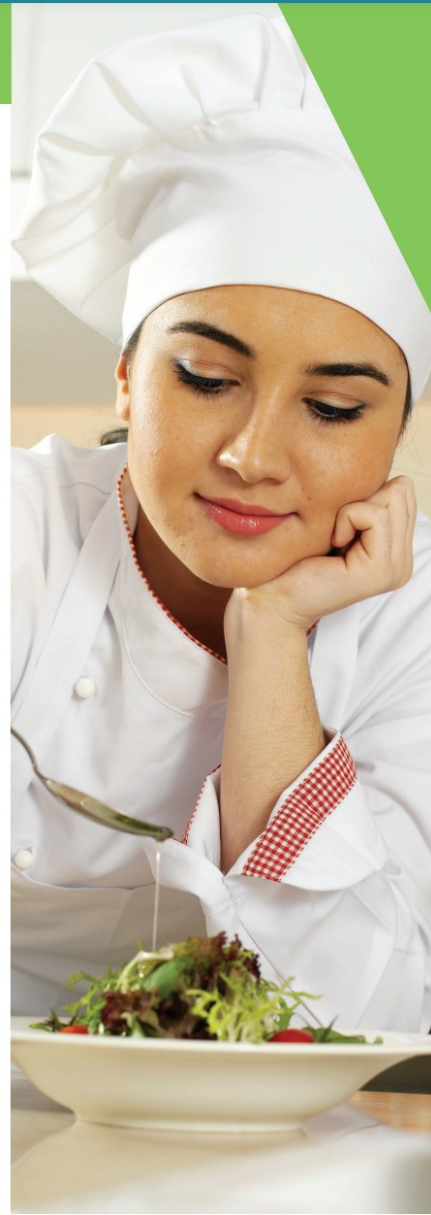
- Direct and may participate in the preparation, seasoning, and cooking of salads, soups, fish, meats, vegetables, desserts, or other foods. May plan and price menu items, order supplies, and keep records and accounts.
- Monitor sanitation practices to ensure that employees follow standards and regulations.
- Check the quality of raw or cooked food products to ensure that standards are met.

YOU WILL THRIVE IN THIS POSITION IF...

- You like activities that include leading, making decisions, and business.
- You like to keep track of how well people and/or groups are doing in order to make improvements.
- You like to manage your time and the time of other people.
- You can add, subtract, multiply, divide and choose the right type of math to solve a problem.



SCAN TO WATCH A VIDEO
ABOUT THIS CAREER PATHWAY



Data Sources
SOC: 35-1011
O'Net, JobsEq, 2021
Texas Workforce Commission, 2021

Prepared by Workforce Solutions Capital Area

A proud partner of the American Job Center Network. Workforce Solutions Capital Area is an equal opportunity employer/program. Auxiliary aids and services are available, upon request, to persons with disabilities. Relay Texas: 1.800.735.2969 (TDD) / 711 (Voice).

CHEF AND HEAD COOKS

HOW TO GET STARTED IN THIS CAREER PATHWAY



Take business, education, and math science classes



Complete a personality test or explore more high-demand careers. **Scan the code to get started!**

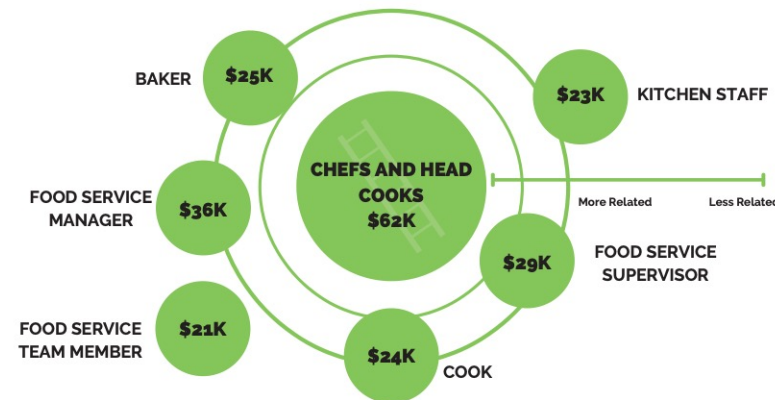


Find a part-time job or internship with a local vet clinic. Register at workintexas.com



Conduct an informational interview with someone in this career

RELATED JOBS WITH MEDIAN SALARY



WHAT IS SOMETHING NEW YOU LEARNED ABOUT THIS CAREER?

Data Sources
SOC: 35-1011
O'Net, JobsEq, 2021
Texas Workforce Commission, 2021
Labor Insight - Burning Glass Technologies

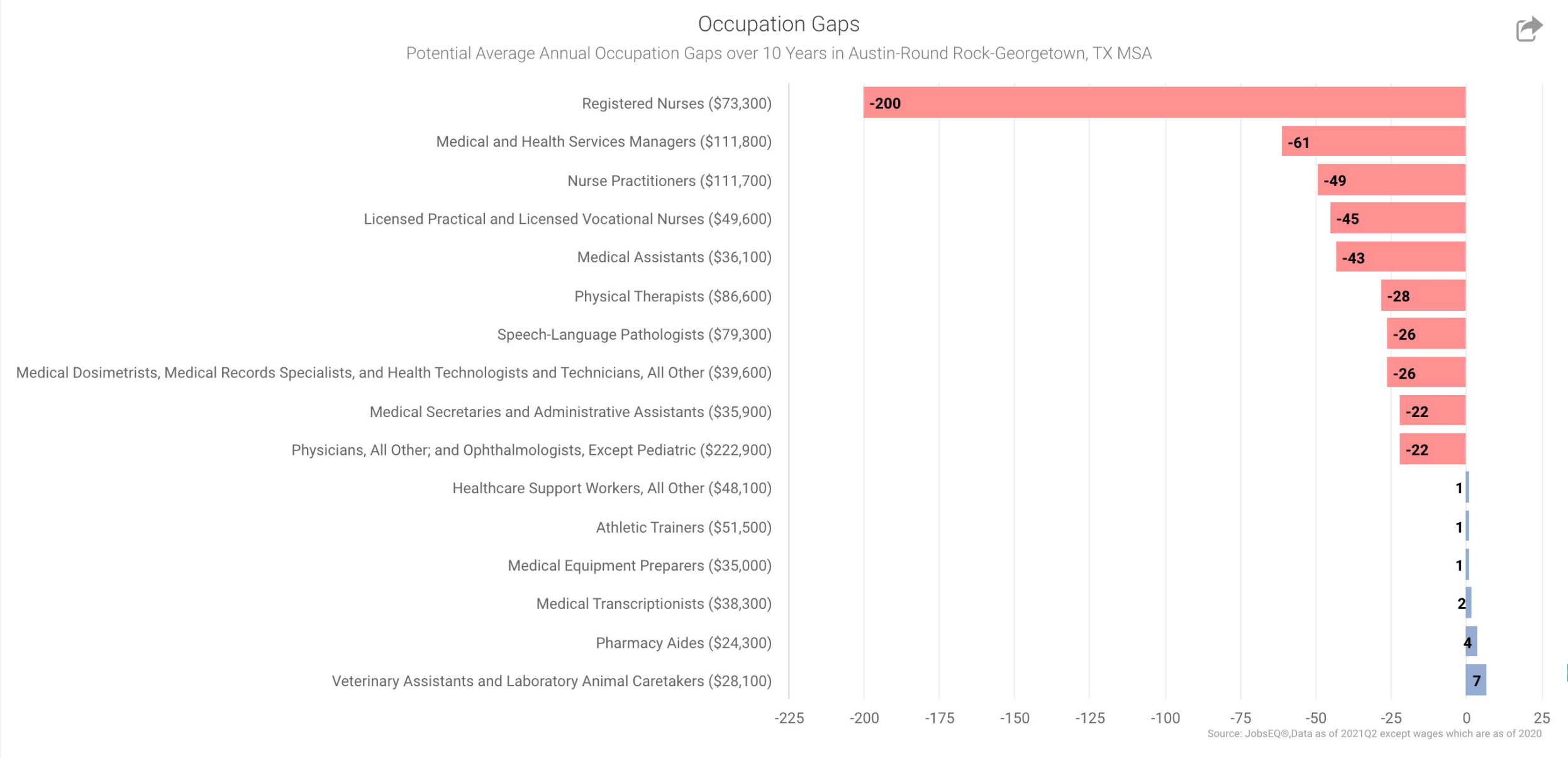
Prepared by Workforce Solutions Capital Area

A proud partner of the American Job Center Network. Workforce Solutions Capital Area is an equal opportunity employer/program. Auxiliary aids and services are available, upon request, to persons with disabilities. Relay Texas: 1.800.735.2969 (TDD) / 711 (Voice).



WORKFORCE
SOLUTIONS
Capital Area
Connecting People to Jobs

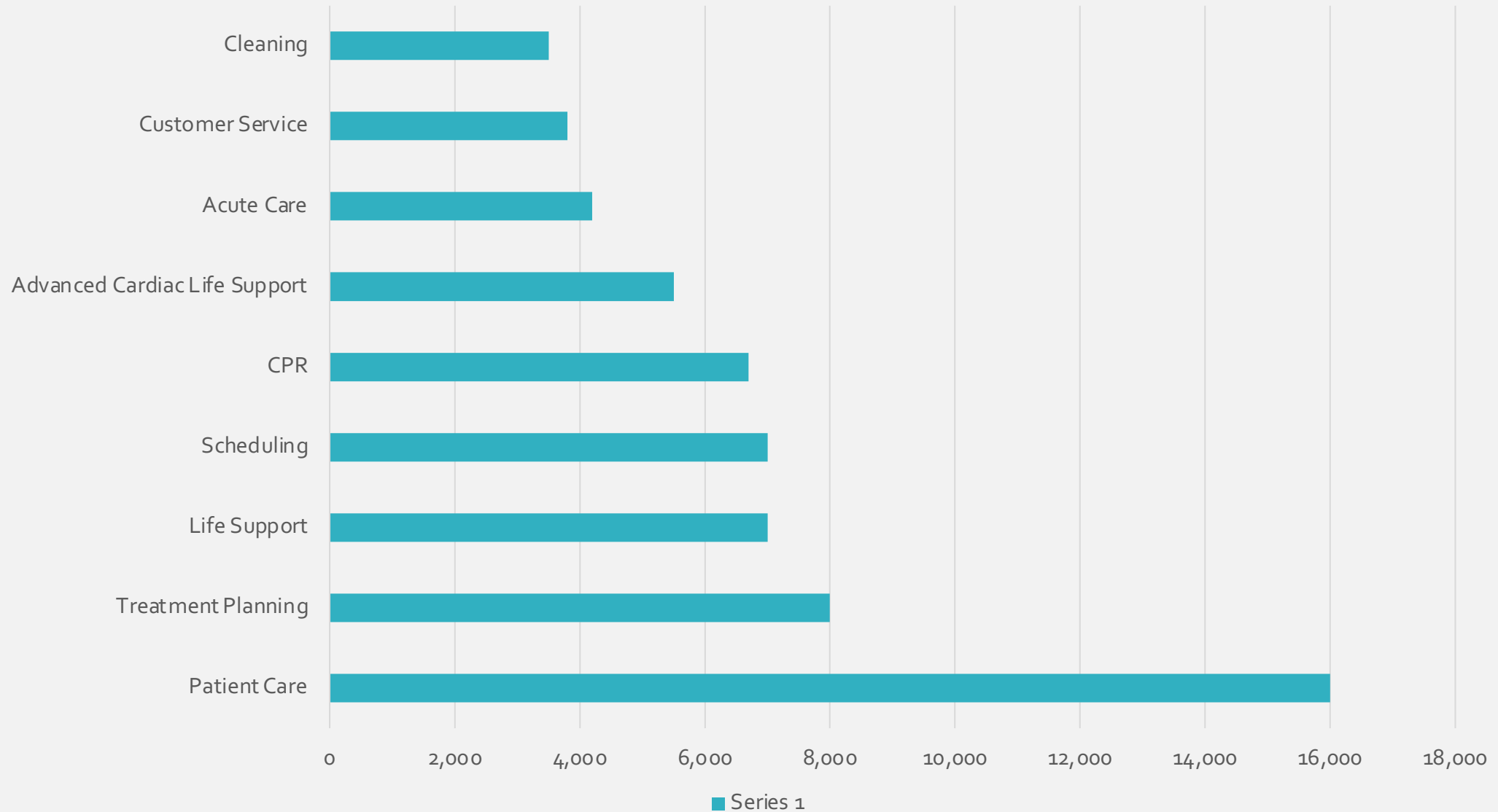
Nurses, Medical Health Managers, Nurse Practitioners and LVN's are in greatest demand for the Austin MSA



RN's, LVN's, Medical Assistants, and Nursing Assistants are in greatest demand in the last 12 months



<input type="checkbox"/>	ONET	ONET Family	Number of Job Postings [?]		Time to Fill [?]		BLS/OES Salary	Location Quotient [?]	
<input type="checkbox"/>	Registered Nurses	Healthcare Practitioners and Technical	Very High	14,735	Easier	28 days	\$73,280	Low	0.8
<input type="checkbox"/>	Licensed Practical and Licensed Vocational Nurses	Healthcare Practitioners and Technical	High	3,159	Similar	35 days	\$49,570	Low	0.8
<input type="checkbox"/>	Medical Assistants	Healthcare Support	High	2,783	Similar	34 days	\$36,050	Average	0.9
<input type="checkbox"/>	Nursing Assistants	Healthcare Support	High	2,466	Easier	27 days	\$30,560	Very Low	0.6
<input type="checkbox"/>	Critical Care Nurses	Healthcare Practitioners and Technical	High	2,143	Easier	24 days	\$73,280	Low	0.8
<input type="checkbox"/>	Speech-Language Pathologists	Healthcare Practitioners and Technical	High	1,763	Similar	36 days	\$79,190	Average	1.0
<input type="checkbox"/>	Health Technologists and Technicians, All Other	Healthcare Practitioners and Technical	Medium	1,544	Similar	34 days	\$39,540	Average	1.0
<input type="checkbox"/>	Dental Assistants	Healthcare Support	Medium	1,503	Similar	32 days	\$41,200	High	1.3

The Most Requested Skills in Health Care







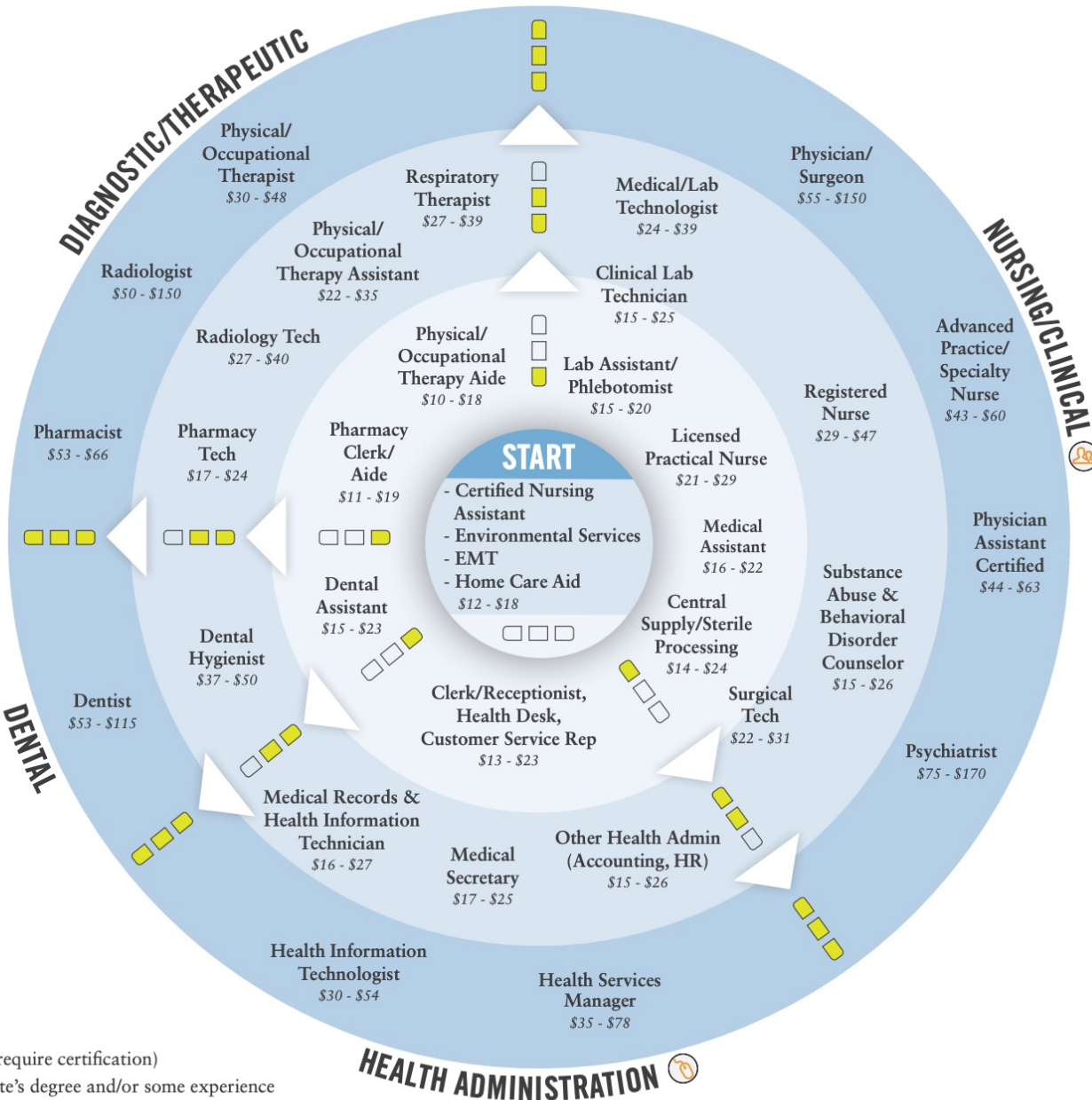
This map includes some of the most in-demand healthcare jobs in Seattle-King County, including branches like nursing and therapeutic care, but the industry has many other opportunities—from behavioral health to marketing. Although career progression is largely tied to education, entry-level positions provide a helpful window into healthcare’s different branches.

TRANSFER SKILLS BETWEEN

-  Public Sector
-  Information Technology

EDUCATION / EXPERIENCE

-  Entry-level (may require certification)
-  Less than Associate's degree and/or some experience
-  Associate's or Bachelor's degree and/or moderate experience
-  Advanced degree and/or significant experience



Range of hourly wages from entry-level to experienced (2017), Emsi

MAP your CAREER
JOB INFO & MORE AT
MapYourCareer.org/Healthcare

HEALTHCARE



Our Guest speakers are from





TALA

Assisted Living's Voice in Texas

CAREERS IN ASSISTED LIVING

Texas Assisted Living Association

Rose Saenz

Vice President of
Workforce Development

October 2021



TEXAS ASSISTED LIVING ASSOCIATION



Rose Saenz, LVN, LNFA, CALM, MBA
Vice President of Workforce Development

WHAT IS THE WORKFORCE DEMAND IN SENIOR LIVING?

Review The Facts

01.

By 2025, we need to recruit 1.4 million workers across the US

02.

The no. 1 job on Texas Help Wanted Online Listing is a Registered Nurse

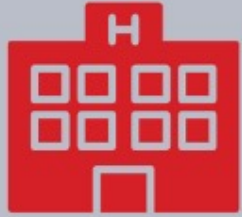
03.

In TEXAS, over 36.8K Jobs are supported in communities

ASSISTED LIVING IS **HIRING!**

PURPOSE DRIVEN

Make an impact and experience the reward in serving others by providing support services for Aging Texans in Assisted Living Communities!



HOSPITALITY EXPERIENCE

Have experience in Hospitality? You may be a fit for Assisted Living! Positions such as concierge, housekeeping, laundry service, maintenance and more cross skills into Assisted Living.

RESTAURANT EXPERIENCE

Experience working in restaurants and service industries? Assisted Living is hiring Chefs, cooks, kitchen support, servers, and more. Consider working for Assisted Living!



CAREERS IN HEALTHCARE



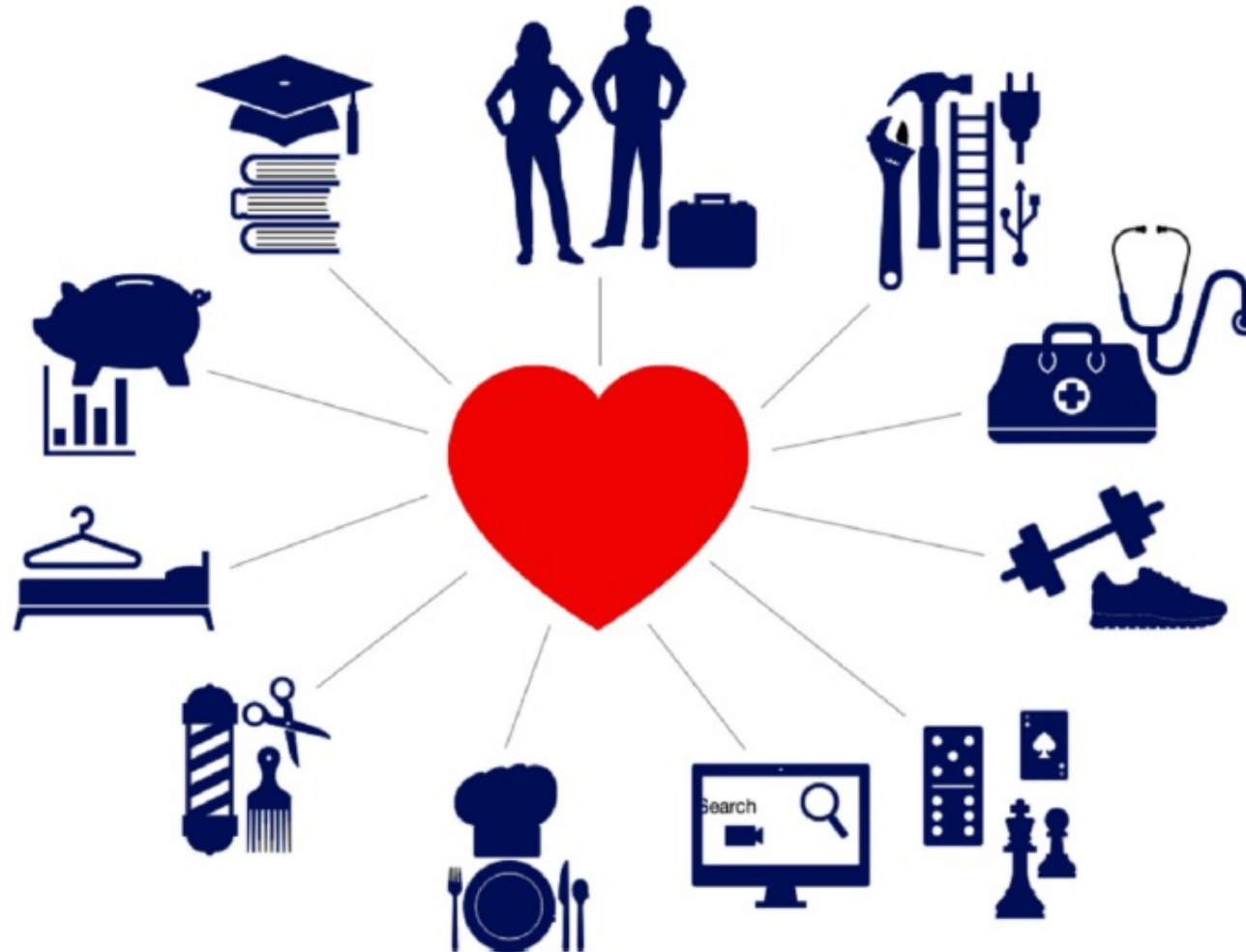
Looking for careers in Healthcare? Assisted Living may be right for you! Caregivers, Nurse Aides, Medication Aides, Nurses, Administrators and more.... Start your career in Assisted Living!

WHAT TYPES OF JOBS?

Senior Living offers career opportunities from various industries

From Hospitality to Healthcare to Business and Finance and much more!!

Careers In Assisted Living



<https://tala.org/careers-in-a/>



ABOUT ▾

MEMBERSHIP ▾

PUBLIC POLICY ▾

CONFERENCE ▾

EDUCATION/EVENTS ▾

CAREERS IN AL ▾

RESOURCES ▾

STAY CONNECTED ▾



JOB OPENINGS IN THE

Spotlight



Provider

Company Website

Careers Page

Atria Senior Living

Company

Careers

TAKEAWAYS



Professional
Development &
Advancement



Support &
Mentorship
along the way



Takes every
member on the
team



Rewarding
Career with
personal
fulfillment



**THANK
YOU!**

learn more about careers in
assisted living at [at TALA.org](https://www.tala.org)



Any Questions for Panelists?

Make Yourself at Home

Live with quality, style and convenience.

LIVE LIFE WELL®

Pursue Your Passions

Enrich your mind, body , and soul.



RETIREMENT CENTER
MANAGEMENT

LIVE LIFE WELL®

The Senior Living Industry

Presented by:
Gretchen Niehaus



RETIREMENT CENTER
MANAGEMENT



RETIREMENT CENTER
MANAGEMENT

LIVE LIFE WELL®

Retirement Center Management

- Retirement Center Management (RCM) senior living communities enable residents to **Live Life Well®**.
- The company was founded in 1996, and its executive team has 30 years of experience in commercial real estate. Today RCM manages a portfolio of 36 outstanding senior living properties well known for exceptional quality of life and gracious living.
- Amenities and activities are designed to encourage mental engagement, wellness, and social involvement. Whether residents choose our independent or assisted living plans or our unique, In Touch Memory Care program, they receive respect, personal service, and compassionate care.
- RCM brands in Texas, Oklahoma and Arkansas include Carriage Inn, Village on the Park, Spring Creek Village, Wood Glen Court, Clayton Oaks, Autumn Grove Cottages and The Village communities. All are targeted to potential residents in their surrounding communities. RCM is based in Houston, Texas and is privately held.

The Village at The Triangle



The Village of Southampton



RETIREMENT CENTER
MANAGEMENT

LIVE LIFE WELL®

The Village of River Oaks



RETIREMENT CENTER
MANAGEMENT

LIVE LIFE WELL®



Our Customers



RETIREMENT CENTER
MANAGEMENT

LIVE LIFE WELL[®]



Village on the Park - Oklahoma City

about 3 months ago

Everyone is posting "First Day of School" pictures and Village on the Park wanted to be part of the fun! These beautiful "Seniors" are living their BEST life and we can learn from their wisdom everyday!! #lifegoals #seniors2020 #everybodysdoingit #villageonthepark #lifelifelwell



RETIREMENT CENTER
MANAGEMENT

LIVE LIFE WELL®



10,000 People in the United States

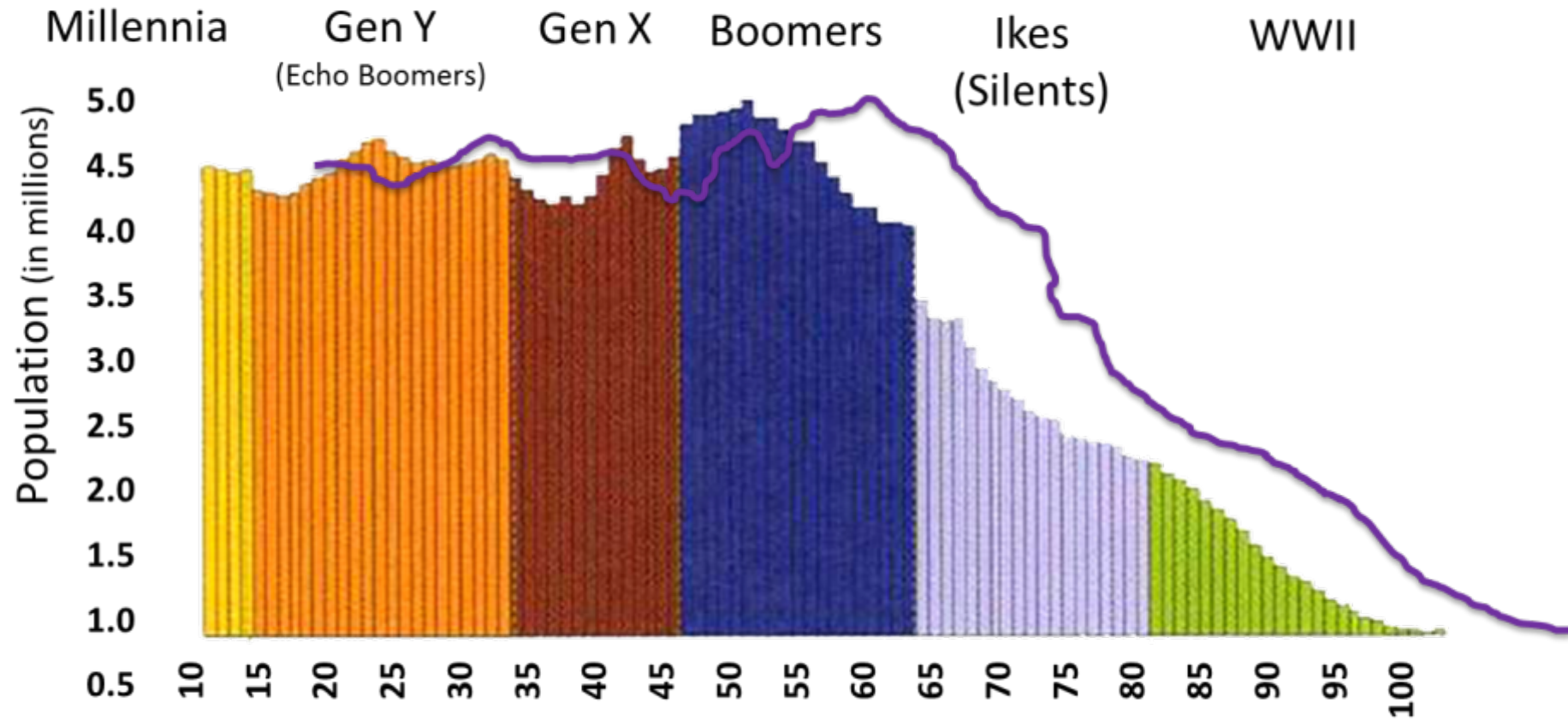
- Turn 65 years old
- 2011 continuing into 2030



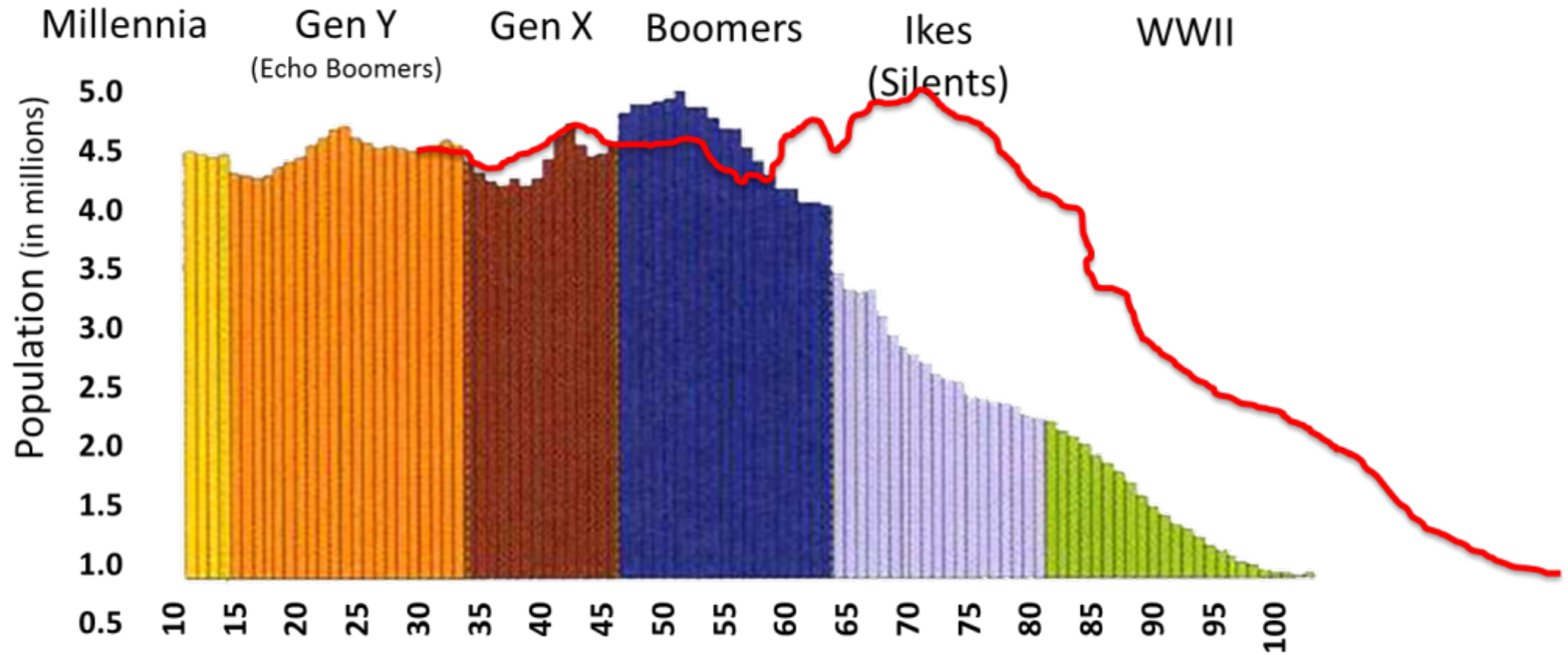
RETIREMENT CENTER
MANAGEMENT

LIVE LIFE WELL®

The Age Wave 2020



The Age Wave 2030



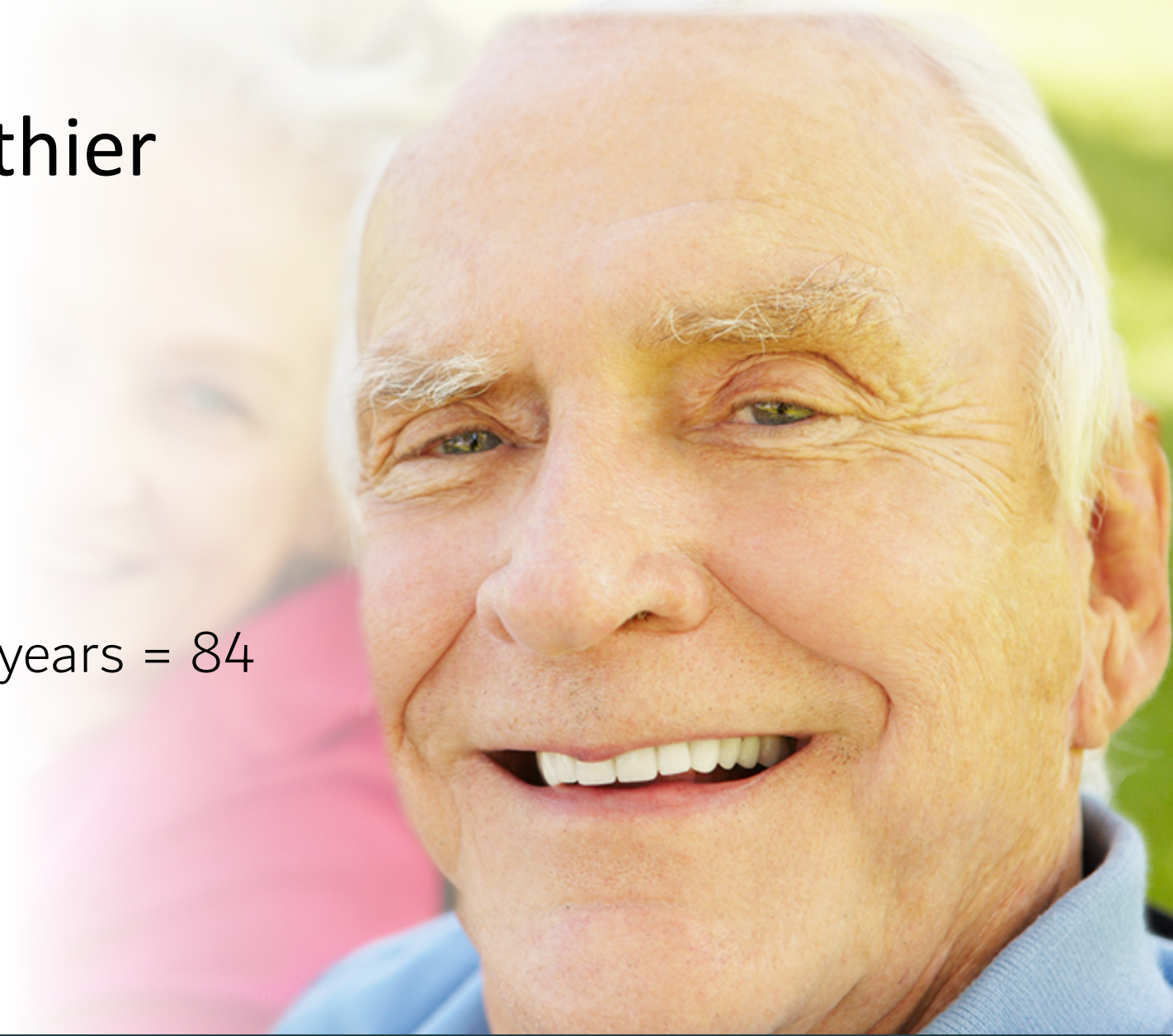
By 2030

- 72 million over 65
- 19% of the population



Living Longer and Healthier

- Medical advances
- Technology
- Healthier Lifestyles
- 65 year olds average 19 more years = 84
- 53,000+ currently 100
- By 2050 = 600,000



And They Have Resources

- Americans 55+ control 75% of wealth
- Boomer Household Income 61% more than pre-Boomers
- Outspend other generations by \$400 billion annually

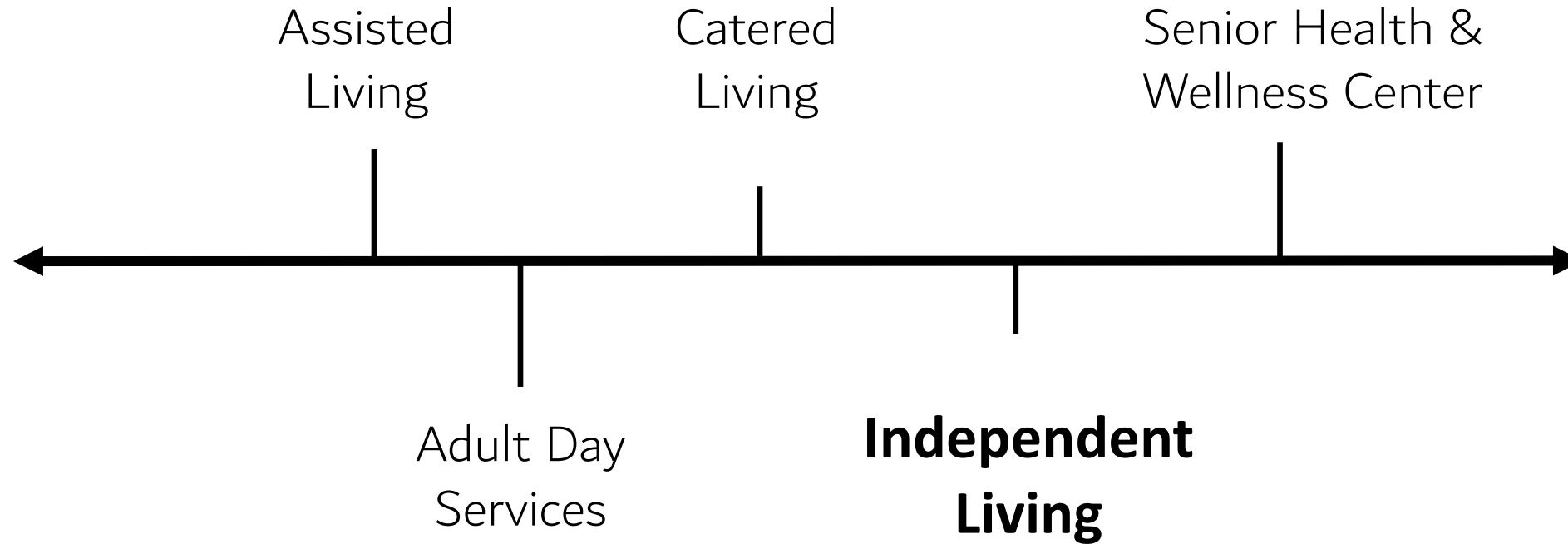


Where Are They Going To Live?

- Large percentage stay in a house or apartment
- Planners will consider their options and make enlightened decisions



Opportunity for Hospitality



Senior Living Communities Offer...

- Social Interaction – a home-based support network & social programs for aging in place
- New lifestyle – freedom, choice, relaxation
- Activities & Programs – preventative, holistic care
- Wellness Programs – including on-site fitness equipment



Senior Living Communities Offer...

- Peace of Mind – health & social well-being ensures that concerns of the older adults & their families are met
- Dining Options – from snack bars to complete meals provide wellness & health benefits
- Transportation – available for physician visits, religious services, shopping, etc.



Senior Living Communities Offer...

- Low-Maintenance Lifestyle – removes homeowner concerns about maintaining their own home
- Security – provides older adults and their families with peace-of-mind that they are in a safe environment and not “home alone”
- And so much more!



What Can I Do in Senior Living?



Typical Positions in Senior Living

Director of Guest (i.e. Patient) Relations	Director of Foodservice	Regional Director	Executive Director
Sales Director	Marketing Director	Director of Community Relations	Sales Manager
Marketing Manager	Culinary Services Director	Executive Chef	Sous Chef
Kitchen Manager	Food & Beverage Director/Manager	Restaurant Manager	Dining Room Manager





AUSTIN REGIONAL
MANUFACTURERS ASSOCIATION

MFG DAY 2021

EXPLORE manufacturing careers, **LEARN** how things are made, and **WATCH** virtual plant tours

**VARIOUS OPPORTUNITIES DURING
THE MONTH OF OCTOBER!**

As manufacturers seek to fill 4.6 million high-skill, high-tech and high-paying jobs over the next decade, MFG Day empowers manufacturers to come together to address their collective challenges so they can help their communities and future generations thrive. #MFGDAY21

LEARN MORE ABOUT CAREERS IN MANUFACTURING

VIRTUAL TOUR OF FLEX | October 19th, 10AM-11AM

Flex is an Austin manufacturer that helps a diverse customer base design and build products that improve the world. Join them for a virtual tour to learn more about their company, careers, and see a tour of their facility.

IN-CLASS VISITS | October 1st - 30th

Central Texas hosts some of the most advanced facilities in the world and possesses a strong, technical workforce. We have a list of these manufacturers that are interested in visiting students for in-class presentations to provide information about the industry and career pathways in manufacturing. These will be happening from October 1st through the 30th. Participating manufacturers include: Applied Materials, Samsung, NXP, Athena Manufacturing, and more.

For more information or to get involved with either event, please contact Liz Gori at liz@arma-tx.org.

Visit us at: www.arma-tx.org



\$87,185

THE AVERAGE ANNUAL INCOME
OF U.S. MANUFACTURING
EMPLOYEES IN 2018.

Source: Bureau of Economic Analysis and Bureau of Labor Statistics, includes pay and benefits



OVER THE NEXT DECADE,

4.6 MILLION

MANUFACTURING JOBS WILL
NEED TO BE FILLED.

Source: Estimate from Deloitte and The Manufacturing Institute



Career Exploration Virtual Resources



YouTube – career prep/exploration

- Career Exploration
- Second Chance Resources
- Soft Skills
- Financial Literacy
- Resume Building
- Career deep dives (educators interview employers)
- WorkInTexas Tutorial
- Job Jumpstarts

[Youtube.com/user/wfscapitalarea](https://www.youtube.com/user/wfscapitalarea)

<p>Taking a Look at Recruitment with APD (2020)</p> <p>35 views • 5 days ago</p>	<p>A Day in the Life of a Paramedic</p> <p>30 views • 1 week ago</p>	<p>Employers Virtual Roundtable: Healthcare</p> <p>19 views • 2 weeks ago</p>	<p>Congrats to Our Senior Graduating in 2020!</p> <p>34 views • 2 weeks ago</p>
<p>Want training in an in-demand career? Check out...</p> <p>31 views • 3 weeks ago</p>	<p>Nuestro mensaje para Project Connect</p> <p>40 views • 1 month ago</p>	<p>Our Message for Project Connect</p> <p>23 views • 1 month ago</p>	<p>Soft Skills: The Competitive Edge</p> <p>51 views • 1 month ago</p>
<p>Work It! How to Network on Social Media to Find Your Dream Job</p> <p>22:56</p>	<p>¿Buscas empleo?: Como encontrar trabajo</p> <p>10:32</p>	<p>Multi-Craft Core Curriculum: Introduction</p> <p>13:55</p>	<p>Resources for Business Owners</p> <p>10:32</p>

Educators and Case Managers:

If you'd like to connect your students with info about careers in manufacturing and skilled trades, please fill out the survey (link below) to connect with WFS' team of outreach specialists!

[Interest Survey](#)



Manufacturing Day and National Apprenticeship Week are quickly approaching!

Manufacturing Day is October 1, and National Apprenticeship Week will take place November 15 - 19. Workforce Solutions Capital Area would love to partner with you to connect your students with information about these in-demand career pathways.

We are glad to help you schedule events throughout the fall of 2021 if you are not available on Manufacturing Day and National Apprenticeship Week. **Please give us as much notice as possible, preferably two to four weeks, so we can coordinate with you.**

Please fill out this survey if you would like to set up learning opportunities for your students!

Other Resources & Announcements

**FREE CHILD CARE
FOR ONE YEAR!**

**SERVICE INDUSTRY RECOVERY
CHILD CARE PROGRAM**



SCHOLARSHIPS AVAILABLE FOR ELIGIBLE SERVICE INDUSTRY WORKERS!

Texas Workforce Commission (TWC) implemented the **Service Industry Recovery** child care program to help low-wage workers in TWC-specified industries.

Use the QR Code to apply!



RETAIL

Examples:
Gas Stations, Supermarkets,
Clothing Stores, Etc.



ACCOMODATION & FOOD SERVICES

Examples:
Hotels, Restaurants,
Caterers, Bars, Etc.

FOR MORE INFO: **Scan** the QR code, **click**

Explore Careers
with Workforce Solutions Capital Area
Grades 9 - 12

What do I like?
Use this section to discover your interests, skills, and personality type!

Where do I want to go?
Learn more about how the skills you learn in high school can help you get your first job after graduation - and beyond!

What do I want to do?
Learn more about careers in each of the endorsement areas.

What skills do I need?
Learn how you can enhance your skills for your future career and how to plan for your future!

Discover more!
Learn about more career resources for you and your family!

A proud partner of the greater San Antonio community, Workforce Solutions Capital Area is an Equal Opportunity Employer/Program. Auxiliary aids and services are available upon request to persons with disabilities. Policy: Texas: 1-800-735-2169 (TDD) / TTY: (214) 359-6000
www.wfsolutionscapa.com

CLIMB THE LADDER
CENTRAL TEXAS

HOME ABOUT I AM A... RESOURCES CONTACT

CAREER EXPLORATION

There are many exciting career opportunities that await you! It is important to begin exploring career options early to make informed decisions regarding high school endorsement areas, classes, college and/or work.

Agriculture, Food, & Natural Resources

Architecture & Construction

Arts & Humanities

Business Management & Administration

Education & Training

Finance

LET'S CHAT!

CLIMB THE LADDER
CENTRAL TEXAS

HOME ABOUT I AM A... RESOURCES CONTACT

OUTREACH SPECIALISTS

Stephanie Calderon
Serves Austin ISD and Del Valle ISD schools

I love being an outreach specialist because it has made me find purpose in advocacy for members of my own community and in under-represented populations across cities. I want to inspire people to really find what their passion and purpose are, and this work allows me to guide them to do just that.

Schedule an Appointment:
[Austin ISD](#) · [Del Valle ISD](#)

Shannon Scriven
Serves Pflugerville ISD schools

I am here to assist you (high and middle school students) with your career and educational choices to help set you up for future success! Being a student myself, I know how overwhelming it can be when thinking about the future and post-graduation goals. But, I'm here to ease any stress or uncertainty you may be feeling. I'm also happy to assist teachers with their classroom curriculum!

Schedule an Appointment:
[Elgin ISD](#) · [Manor ISD](#) · [Pflugerville ISD](#)

LET'S CHAT!

Connect with us



Want to explore more? Visit our new site!

www.climbtheladderctx.com

Want help with your resume or information about careers and training? Email us at:

CareerLadder@wfscapitalarea.com

SUBSCRIBE ON YOUTUBE

[@wfscapitalarea](#)

See more videos like this on our channel!



LET'S BE SOCIAL

[@wfscapitalarea](#)

Follow us on your favorite apps!



- **10/26 @ 10:30am:** K-12 Healthcare Workgroup—[Register Here](#)
- Topic: Diagnostic Medical Sonographer Career Pathway
- **11/10 @ 3:30 pm: Workforce Wednesday Webinar**
- **Topic:** Apprenticeship Programs in Texas

Upcoming Webinars



Thank You