

# WELCOME!

WHILE YOU WAIT ... BE SURE TO FOLLOW US ON YOUR  
FAVORITE SOCIAL MEDIA CHANNELS!

## SUBSCRIBE ON YOUTUBE

@wfscapitalarea

*See more videos like this on our channel!*



## LET'S BE SOCIAL

@wfscapitalarea

*Follow us on your favorite apps!*





# Workforce Wednesday Webinar

## Workshop + Employer Spotlight

Featuring: Applied Materials & Sheet Metal Local 67



A black speech bubble with a pointed bottom, containing the text "POLL ALERT" in white. The bubble is positioned in the center of the frame. The background is light gray with several concentric, curved lines in a light red color, some solid and some dashed, radiating from the center.

**POLL ALERT**

# INDUSTRY FOCUS FOR FEBRUARY:

## Skilled Trades/Manufacturing



Offers immediate careers in various pathways



Career advancement



Earn and Learn opportunities



On-the-job training



# How to look for immediate openings



[Jobs Now](#) – see  
immediate jobs  
posted by Workforce  
Solutions Capital Area



[WorkInTexas.com](#) -  
look for jobs only in  
Texas, build your  
resume here!

**“Where employers  
find you”**



[Indeed](#) - keyword  
‘seasonal’ for tons  
of jobs hiring right  
now!



*Burning Glass fact:*  
Over **3,600** online job  
postings in skilled  
trades/manufacturing  
in the last 30 days!



## Workforce Solutions Capital Area has created RE:WorkNOW

- **260 full scholarships** for rapid, safe training programs for City of Austin and Travis County residents on a first-come, first-served basis — *space is limited!*
- **Supporting \$200/week stipends**, transportation, digital inclusion and career guidance
- **Made possible by** Travis County and the City of Austin funding

[reworknow.org/austin](https://reworknow.org/austin)





- Spaces are limited! You can apply today to learn more about eligibility and identify training programs that align with their career interests: [reworknow.org/Austin](https://reworknow.org/Austin).

- All previously mentioned RE:Work NOW training providers' information/training program details can be accessed through the RE:Work NOW platform.

- Questions? Email [wfs.werc@wfscapitalarea.com](mailto:wfs.werc@wfscapitalarea.com), or call 512-381-5160.

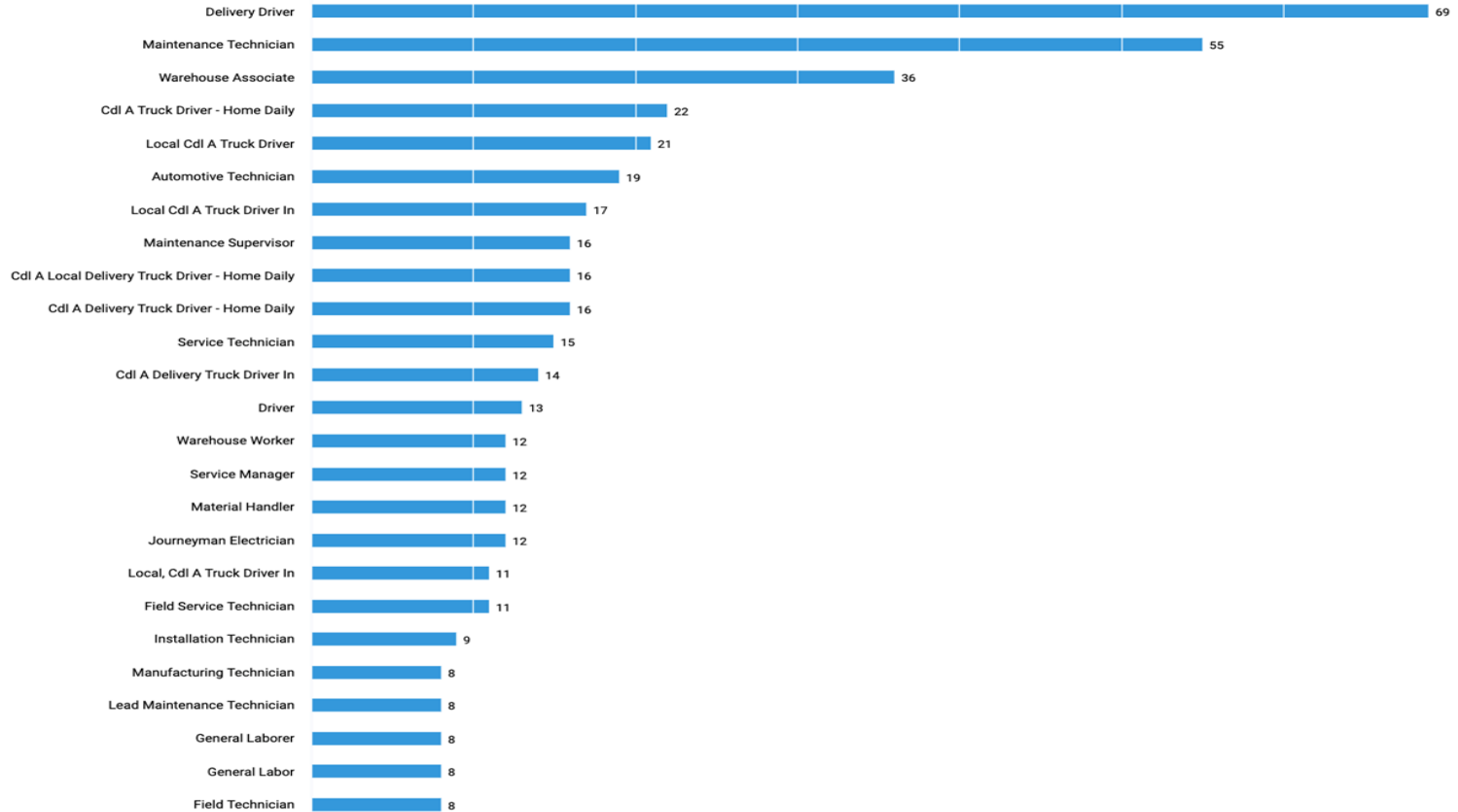
**[Referral Tool](#)**

### Career trainings available:

- Construction/Skilled Trades
- Certified Production Technician
- Data analytics
- Cyber security
- Full stack JAVA developer
- Administrative assistant
- Phlebotomist
- Medical secretary
- Welding
- Truck Driving
- HVAC
- and more!

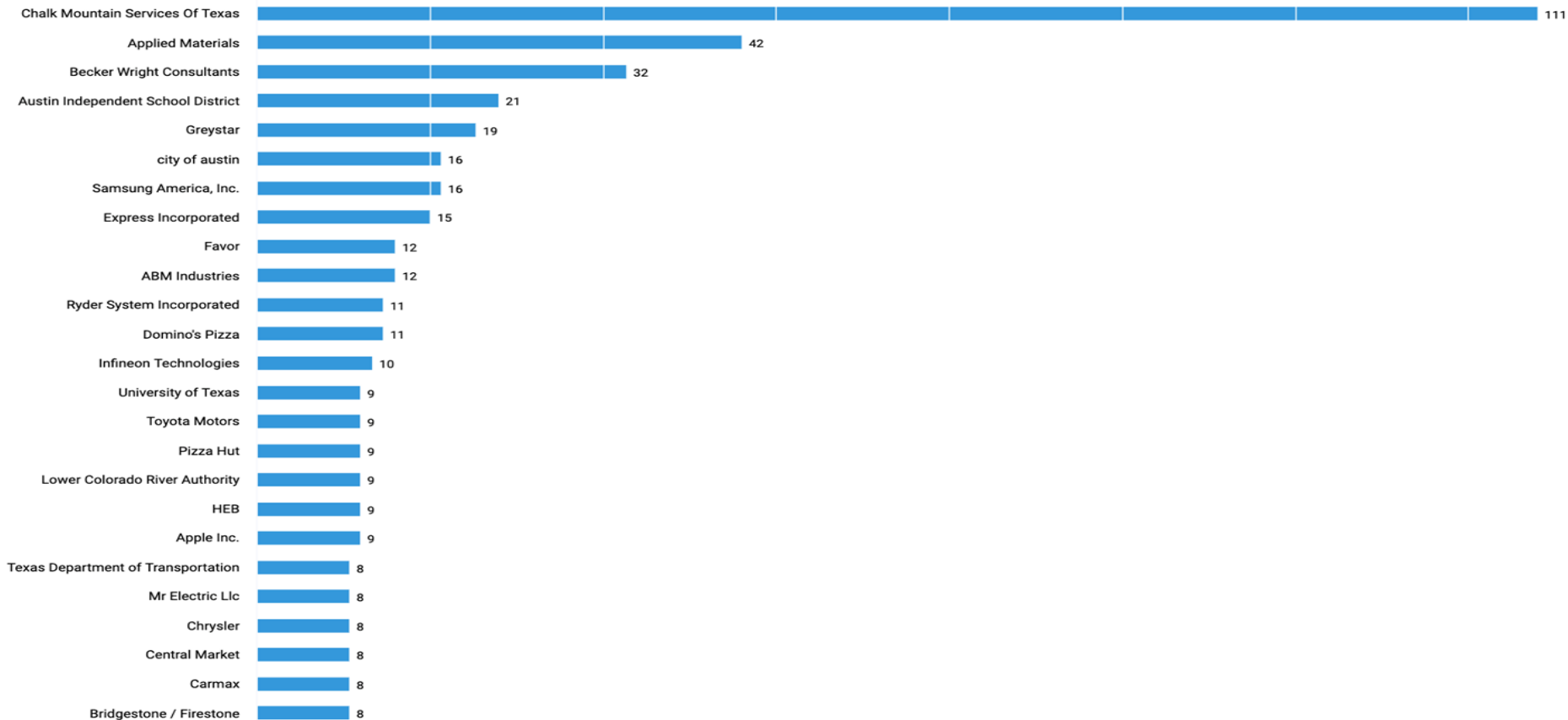


## Top Job Titles posted in online job ads in Austin MSA Skilled Trades/Manufacturing



# Top Employers posting online job ads in Austin MSA

## Skilled Trades/Manufacturing



# 10 Year Demand – Skilled Trades/Manufacturing

Occupation Distribution for Skilled Trades/Manufacturing in Austin-Round Rock-Georgetown, TX MSA, Baseline

EXPORT

|                          |         |  | CURRENT |               | 10-YEAR DEMAND |           |             |              |
|--------------------------|---------|--|---------|---------------|----------------|-----------|-------------|--------------|
| <input type="checkbox"/> | SOC     | Occupation   | Empl    | Avg Ann Wages | Exits          | Transfers | Empl Growth | Total Demand |
| <input type="checkbox"/> | 47-2061 | Construction Laborers  | 11,441  | \$32,600      | 4,216          | 9,965     | 2,957       | 17,139       |
| <input type="checkbox"/> | 53-3032 | Heavy and Tractor-Trailer Truck Drivers  | 6,620   | \$42,800      | 2,976          | 5,299     | 1,393       | 9,669        |
| <input type="checkbox"/> | 47-2031 | Carpenters   | 5,753   | \$40,000      | 1,933          | 4,488     | 1,055       | 7,475        |
| <input type="checkbox"/> | 47-1011 | First-Line Supervisors of Construction Trades and Extraction Workers                                 | 5,009   | \$66,200      | 1,665          | 4,107     | 1,196       | 6,967        |
| <input type="checkbox"/> | 53-7062 | Laborers and Freight, Stock, and Material Movers, Hand   | 4,944   | \$31,600      | 2,510          | 5,244     | 1,386       | 9,140        |
| <input type="checkbox"/> | 47-2111 | Electricians   | 4,793   | \$53,300      | 1,691          | 4,635     | 1,464       | 7,790        |
| <input type="checkbox"/> | 43-9061 | Office Clerks, General   | 4,224   | \$41,900      | 2,494          | 2,850     | 472         | 5,816        |
| <input type="checkbox"/> | 47-2152 | Plumbers, Pipefitters, and Steamfitters  | 3,781   | \$51,500      | 1,218          | 3,443     | 932         | 5,593        |
| <input type="checkbox"/> | 11-9021 | Construction Managers  | 3,660   | \$95,300      | 871            | 2,115     | 1,078       | 4,063        |
| <input type="checkbox"/> | 51-2028 | Electrical, Electronic, and Electromechanical Assemblers, Except Coil Winders, Tapers, and Finishers | 3,648   | \$33,400      | 1,703          | 2,811     | 652         | 5,166        |
| <input type="checkbox"/> | 15-1256 | Software Developers and Software Quality Assurance Analysts and Testers                              | 3,164   | \$118,100     | 504            | 2,054     | 1,004       | 3,562        |
| <input type="checkbox"/> | 51-2092 | Team Assemblers  | 3,116   | \$30,900      | 1,261          | 2,337     | -107        | 3,491        |
| <input type="checkbox"/> | 11-1021 | General and Operations Managers  | 3,115   | \$128,900     | 721            | 2,266     | 699         | 3,686        |
| <input type="checkbox"/> | 53-3033 | Light Truck Drivers  | 3,014   | \$54,100      | 1,433          | 2,551     | 1,066       | 5,050        |
| <input type="checkbox"/> | 47-2073 | Operating Engineers and Other Construction Equipment Operators                                       | 2,941   | \$42,400      | 1,111          | 2,648     | 721         | 4,480        |
| <input type="checkbox"/> | 49-9021 | Heating, Air Conditioning, and Refrigeration Mechanics and Installers                                | 2,519   | \$43,900      | 756            | 1,960     | 624         | 3,340        |
| <input type="checkbox"/> | 53-3058 | Passenger Vehicle Drivers, Except Bus Drivers, Transit and Intercity                                 | 2,502   | \$30,700      | 2,083          | 1,489     | 964         | 4,536        |
| <input type="checkbox"/> | 47-2141 | Painters, Construction and Maintenance   | 2,462   | \$36,300      | 939            | 1,797     | 479         | 3,215        |
| <input type="checkbox"/> | 51-9061 | Inspectors, Testers, Sorters, Samplers, and Weighers   | 2,077   | \$45,300      | 825            | 1,732     | -57         | 2,499        |



**Corinna Pereira,  
Director with  
Sheet Metal  
Local 67**





## Corinna Pereira Sheet Metal Local 67

- Overview
- Background – how long the company's been around?
- What does a sheet metal worker do?
- How do I become a sheet metal worker?
  - Application pointers
- What are the benefits with enrolling with Sheet Metal Local 67?
- How can I be successful in a career as a sheet metal worker?

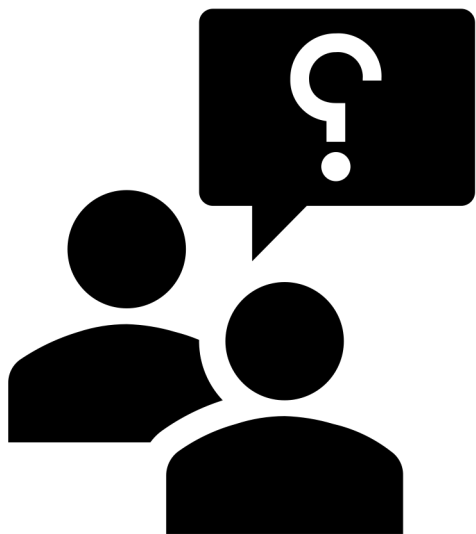




# AUSTIN JATC

Apprenticeship Training Center





Q&A



**Mark  
Derderian,  
Manager with  
Applied  
Materials**







make possible a  
**better future**

Applied Materials is the leader in materials engineering solutions used to produce virtually every new chip and advanced display in the world and we are uniquely positioned to help make possible a better future through the power of technology.





We provide sophisticated **manufacturing systems** and **comprehensive services** to the **semiconductor** and **display industries**



FOUNDED IN 1967

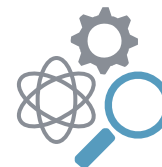
# World's #1

semiconductor and display equipment company



**\$17.2 billion**  
revenue

TOTAL FISCAL 2020



**\$2.2 billion**  
R&D spending



**~14,300**  
patents

4+ PATENTS\* PER DAY



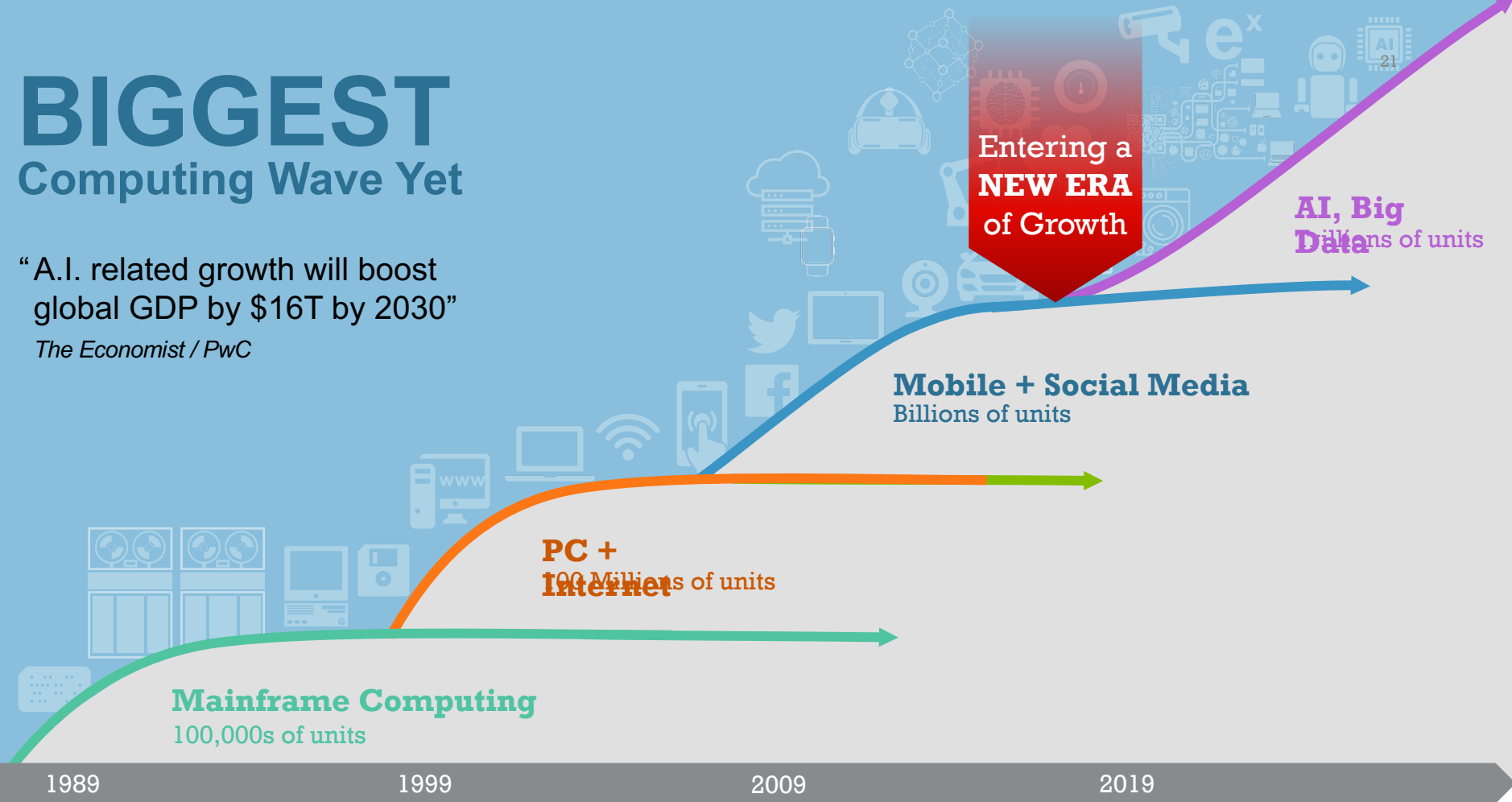
**~24,000**  
employees  
in **19** countries

Data as of fiscal year end, October 25, 2020; US patents filed

# BIGGEST Computing Wave Yet

“A.I. related growth will boost  
global GDP by \$16T by 2030”

*The Economist / PwC*









- **Overview**
- **Background** - how many locations in the Austin metro area (Pflugerville, Manor, Del Valle etc.) for people who live outside of Austin
- **What is the hiring process for Applied Materials?**
  - **Temp to Permanent Jobs with Adecco**
- **Open Jobs:** [Applied Materials Jobs Posted Website](#), [Adecco Jobs Board](#)
- **When does Applied Materials experience a high volume of open jobs (spring, summer, fall, etc.)?**
- **Any perks/benefits with working at Applied Materials?**
- **What is the culture like at Applied Materials?**
- **Skill recruiters are seeing in new hires**
- **Application pointers** - What's something that can make an applicant's application stand out from others?



© Applied Materials, Inc. 2019

# Certified Production Technician (CPT) Training



- Austin Regional Manufacturing Association (ARMA) partnered with Workforce Solutions Capital Area to successfully pilot and scale a rapid training program to provide necessary skills for people interested in a manufacturing career.

**More than 50 students earned a certification and were placed into employment at companies like Samsung Electronics America, NXP Semiconductors, Applied Materials, Infineon Technologies and Athena Manufacturing, L.P.**

**This program is expanding in 2021 with an anticipated two hundred and fifty or more scheduled for classes. Students and companies are still welcome to get involved.**

**Certified Production Technician | ACC Continuing Education**

<https://lnkd.in/eKNUz79>

**Advanced Manufacturing Program | Skillpoint Alliance**

<https://bit.ly/3iCv5Yp>

# Hear from a CPT graduate

Les Pilcher, a  
graduate of  
Skillpoint Alliance  
and Engineering  
Technician with  
Samsung





Q&A



**WORKFORCE**  
SOLUTIONS **Capital  
Area**  
*Connecting People to Jobs*

Please complete our post-survey at the end of this webinar. If you would like a copy of this slide deck, please email [careerladder@wfscapitalarea.com](mailto:careerladder@wfscapitalarea.com)



**WORKFORCE**  
SOLUTIONS Capital Area

*Connecting People to Jobs*



**The next Workforce  
Wednesday Webinar is on  
3/10 from 3:30-4:30 PM  
CT**

**Next Industry Focus will be  
in the Healthcare Industry**

**[Register here](#)**



# Connect with us



*Want to explore more? Visit our new site!*

[www.climbtheladderctx.com](http://www.climbtheladderctx.com)

*Want help with your resume or information about careers and training? Email us at:*

**CareerLadder@wfscapitalarea.com**

## SUBSCRIBE ON YOUTUBE

**@wfscapitalarea**

*See more videos like this on our channel!*



## LET'S BE SOCIAL

**@wfscapitalarea**

*Follow us on your favorite apps!*

